



SPECIAL COUNCIL MEETING AGENDA

May 16, 2023, 7:00 pm

Council Chambers

1. CALL TO ORDER

2. COUNCILLOR ABSENCES

3. AGENDA ADDITIONS

4. ADOPTION OF THE AGENDA

5. DISCLOSURE OF CONFLICT OF INTEREST

6. DELEGATIONS

7. REPORTS

8. ADOPTION OF MINUTES FROM PREVIOUS MEETINGS

9. DEFERRED BUSINESS AND TABLED ITEMS

- a. Capital Projects
 - i. Cemetery – Plan Review
 - ii. Burrow Pit/Trail Development – Plan Review
 - iii. Fitness Center – Plan Review

10. NEW BUSINESS

- a. Capital Projects
 - i. Vehicle Quotes
 - ii. New Hamlet Office
- b. Employee Benefits - plan review
- c. Asset disposal – freezers
- d. AWP MOU Committee
- e. Occupation Health & Safety Committee – membership
- f. RCMP Community Priorities
- g. In-Camera session – Legal Proceeding

11. STRATEGIC PLAN REVIEW

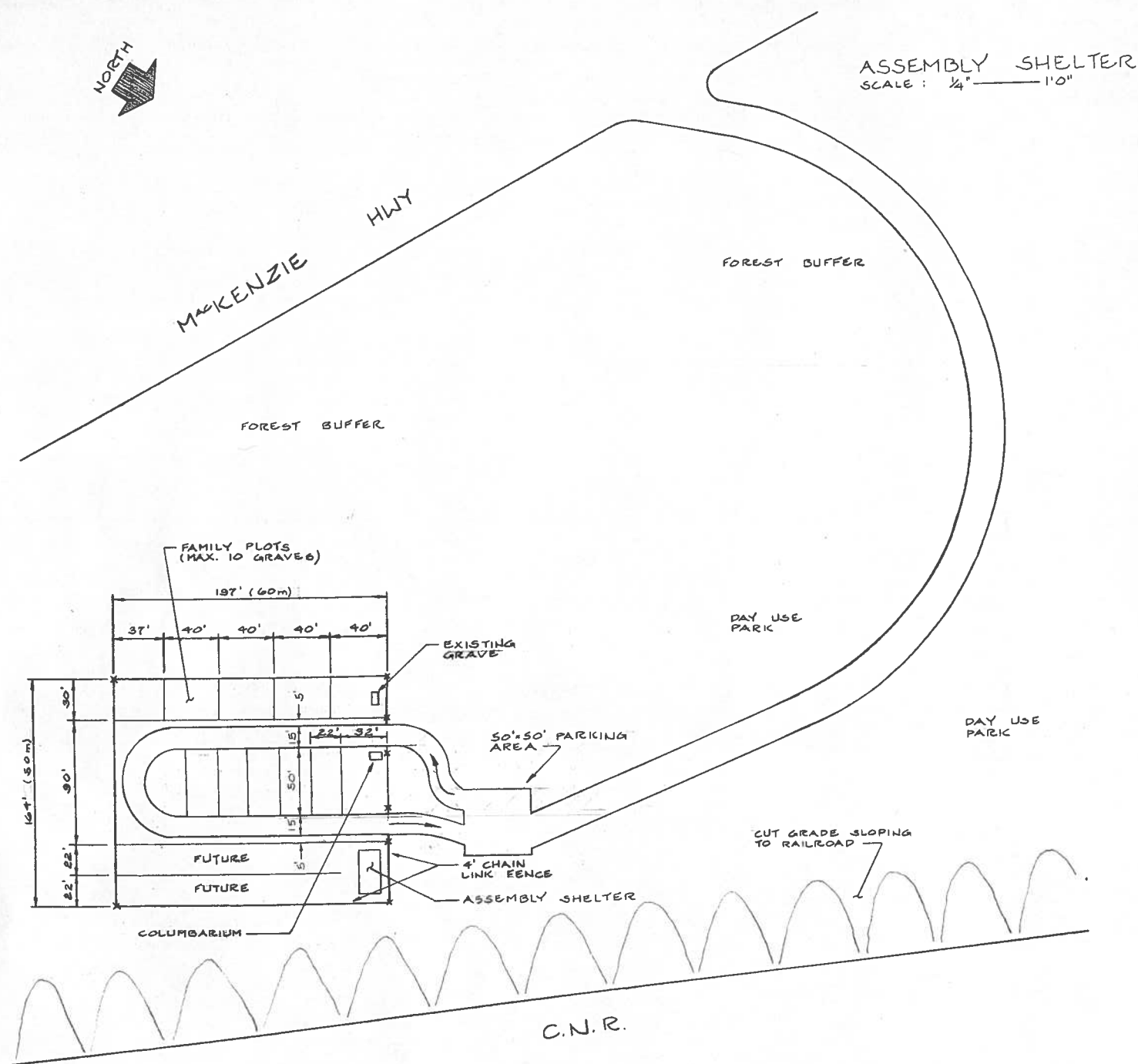
12. BYLAWS & POLICIES

13. COUNCIL ISSUES & CONCERNS

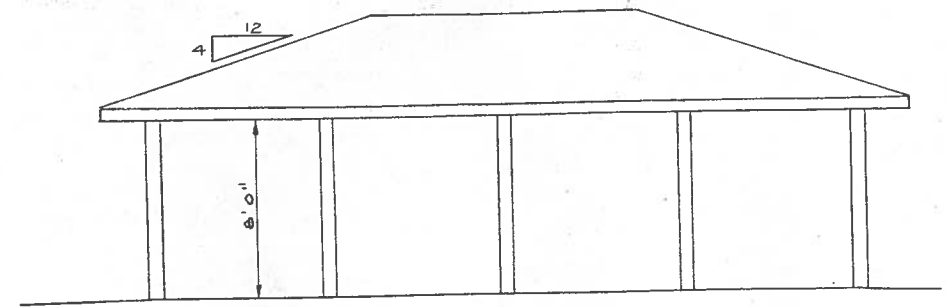
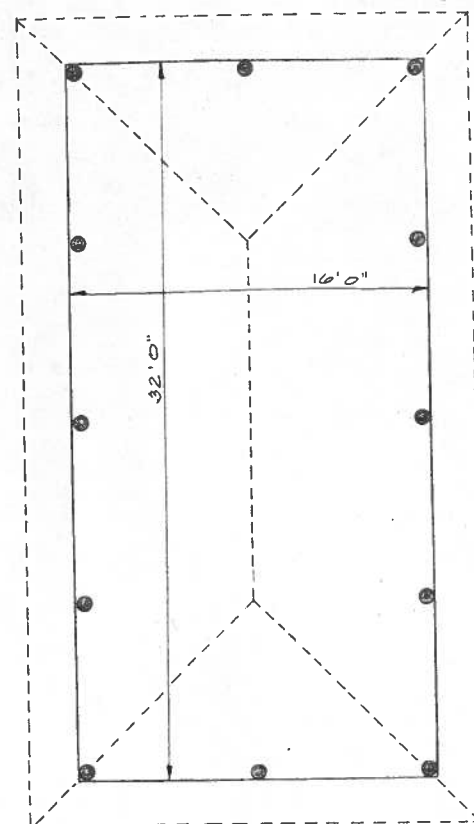
14. CORRESPONDENCE OUTGOING

15. CORRESPONDENCE & INFORMATION

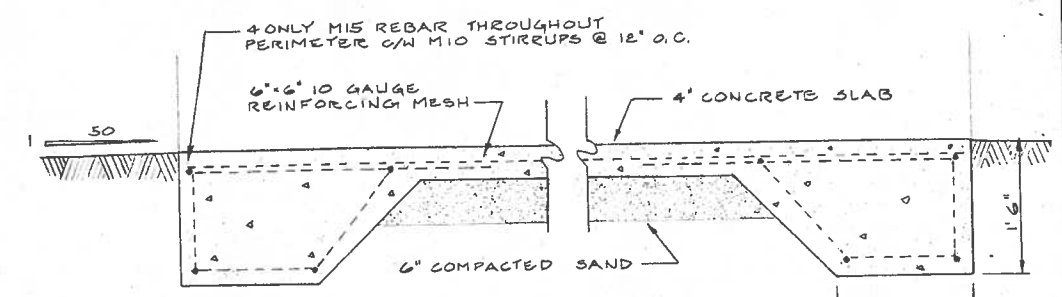
16. ADJOURNMENT



ASSEMBLY SHELTER
SCALE: 1/4" = 1'0"

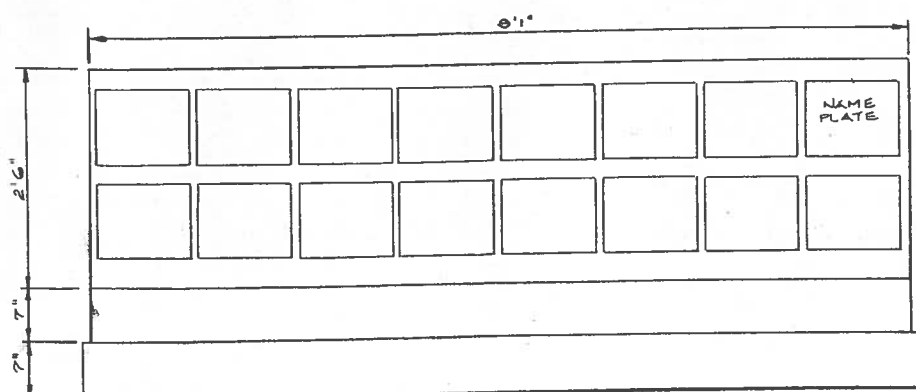


ELEVATION SCALE: 1/4" = 1'0"

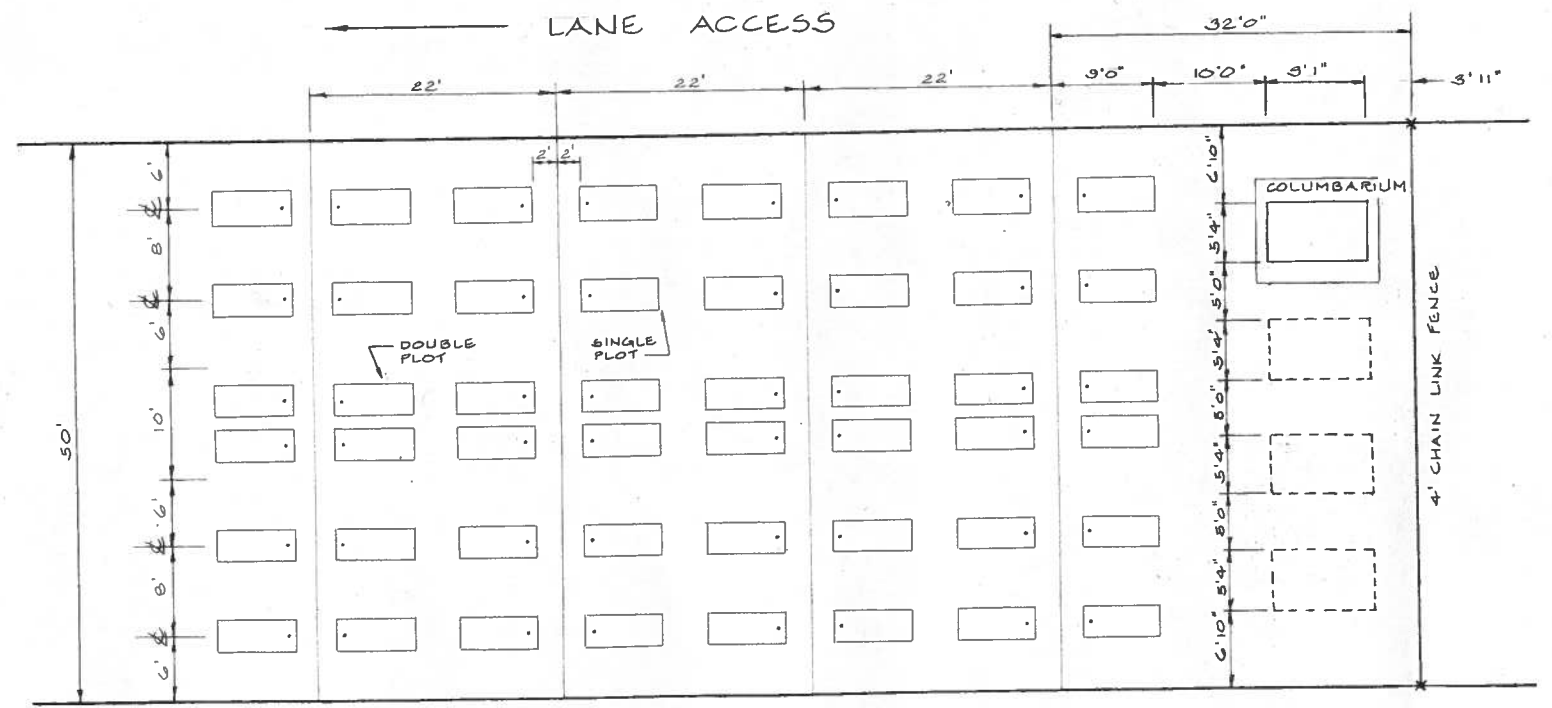
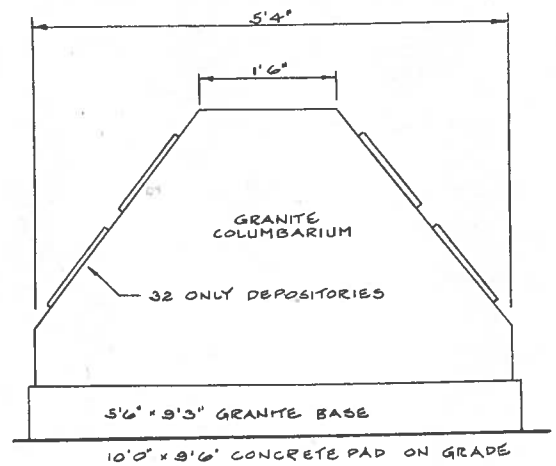


FOUNDATION SLAB
SCALE: 1" = 1'0"

CEMETERY SITE PLAN SCALE: 1" = 50'

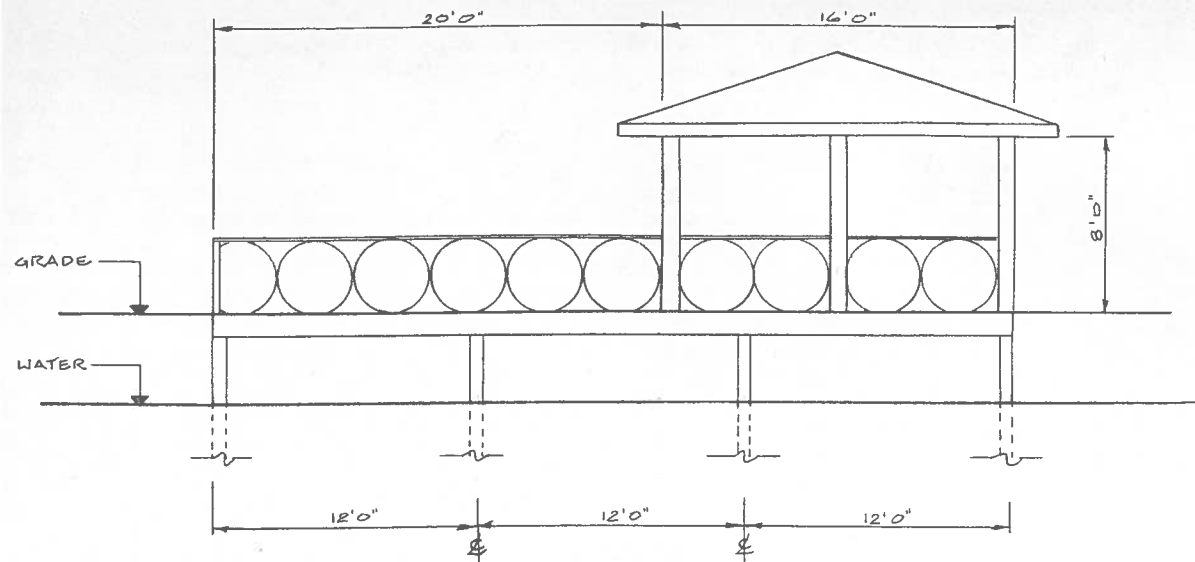


COLUMBARIUM SCALE: 1" = 1'0"

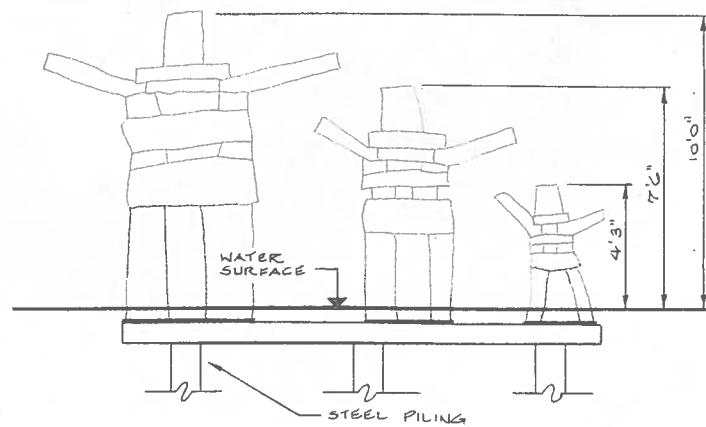


TYPICAL PLOT LAYOUT SCALE: 1/8" = 1'0"

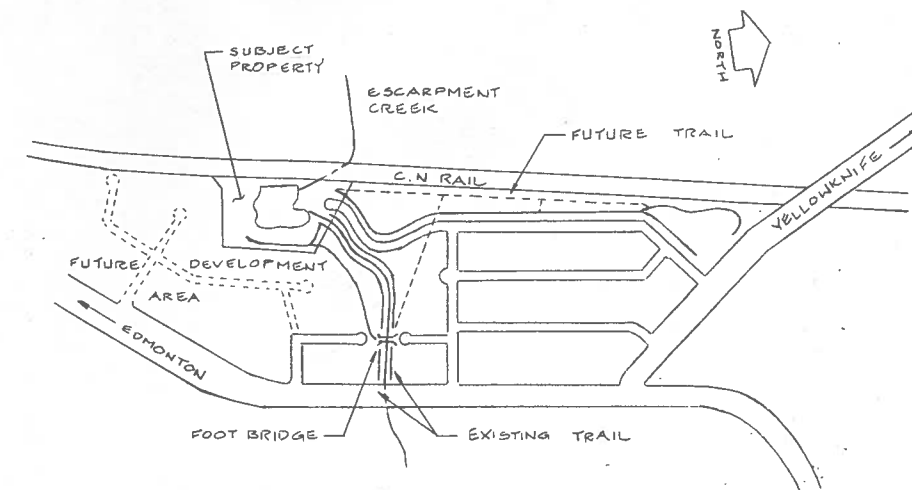
NEW ITEM



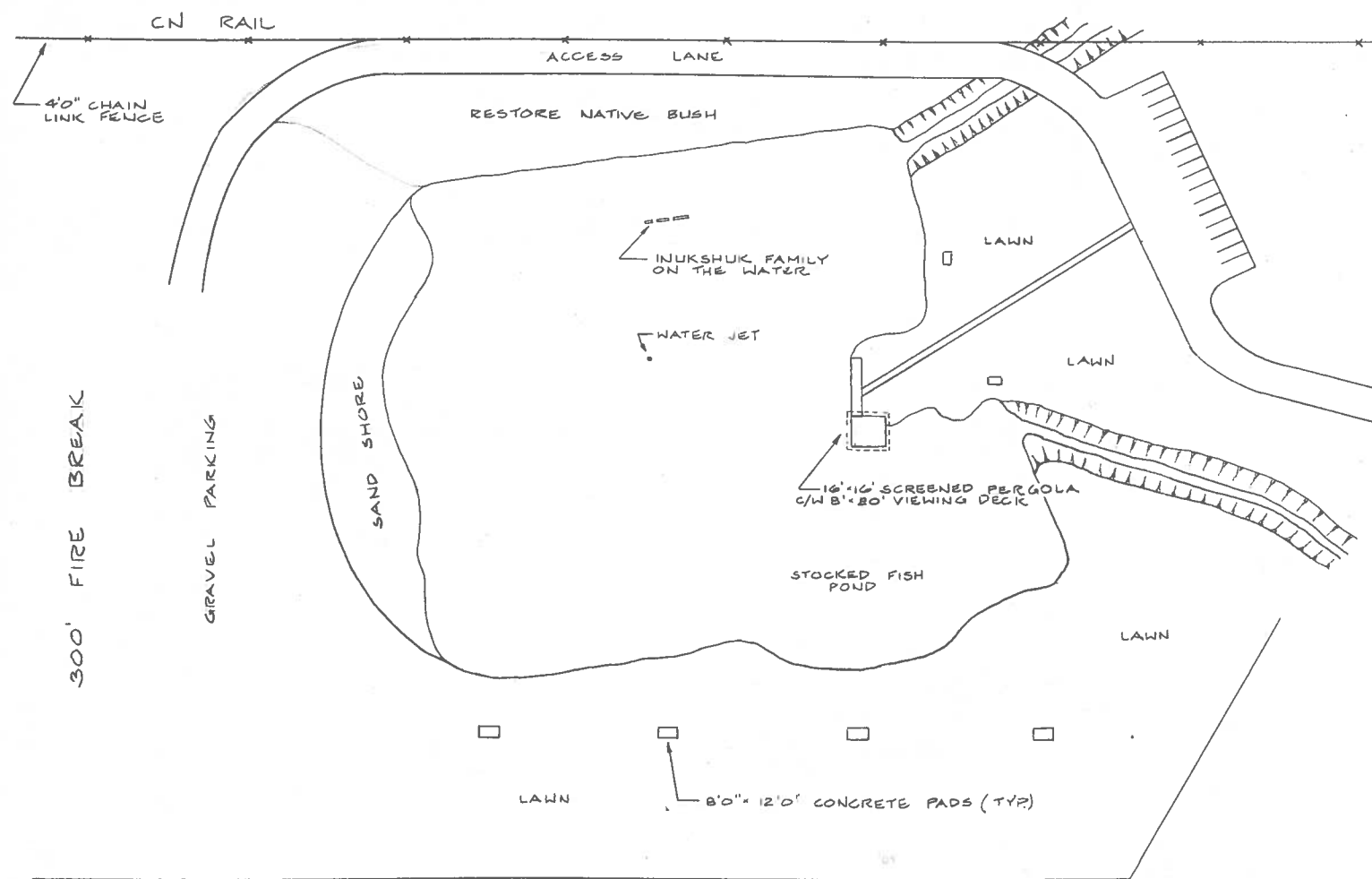
VIEWING DECK & PERGOLA
SCALE: 1/4" = 1'0"



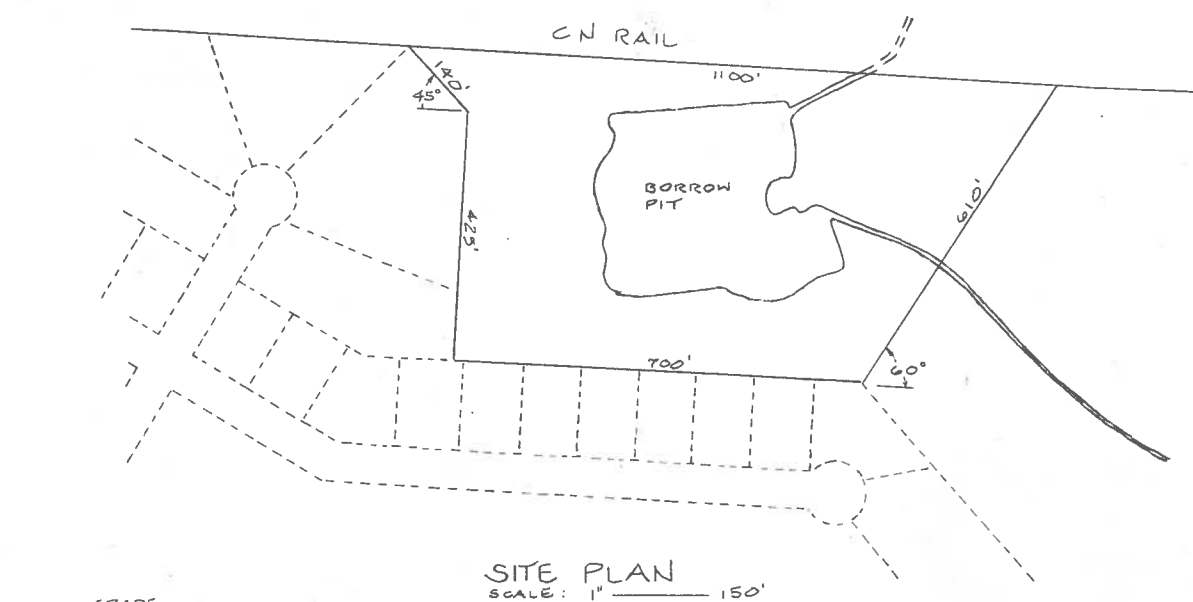
INUKSHUK FAMILY ON THE WATER
SCALE: 1" = 30'0"



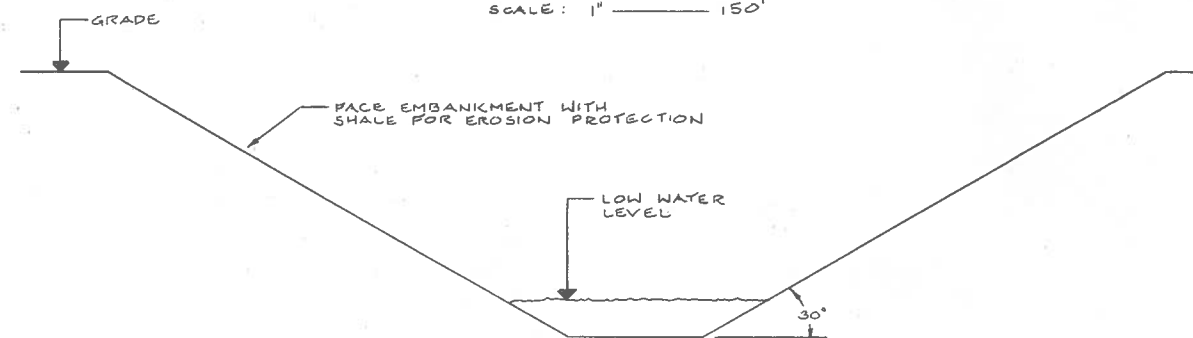
GENERAL SITE PLAN



DAY PARK SITE PLAN
SCALE: 1'0" = 50'0"



SITE PLAN
SCALE: 1" = 150'



CREEK BED PROFILE
SCALE: 1/2" = 1'0"

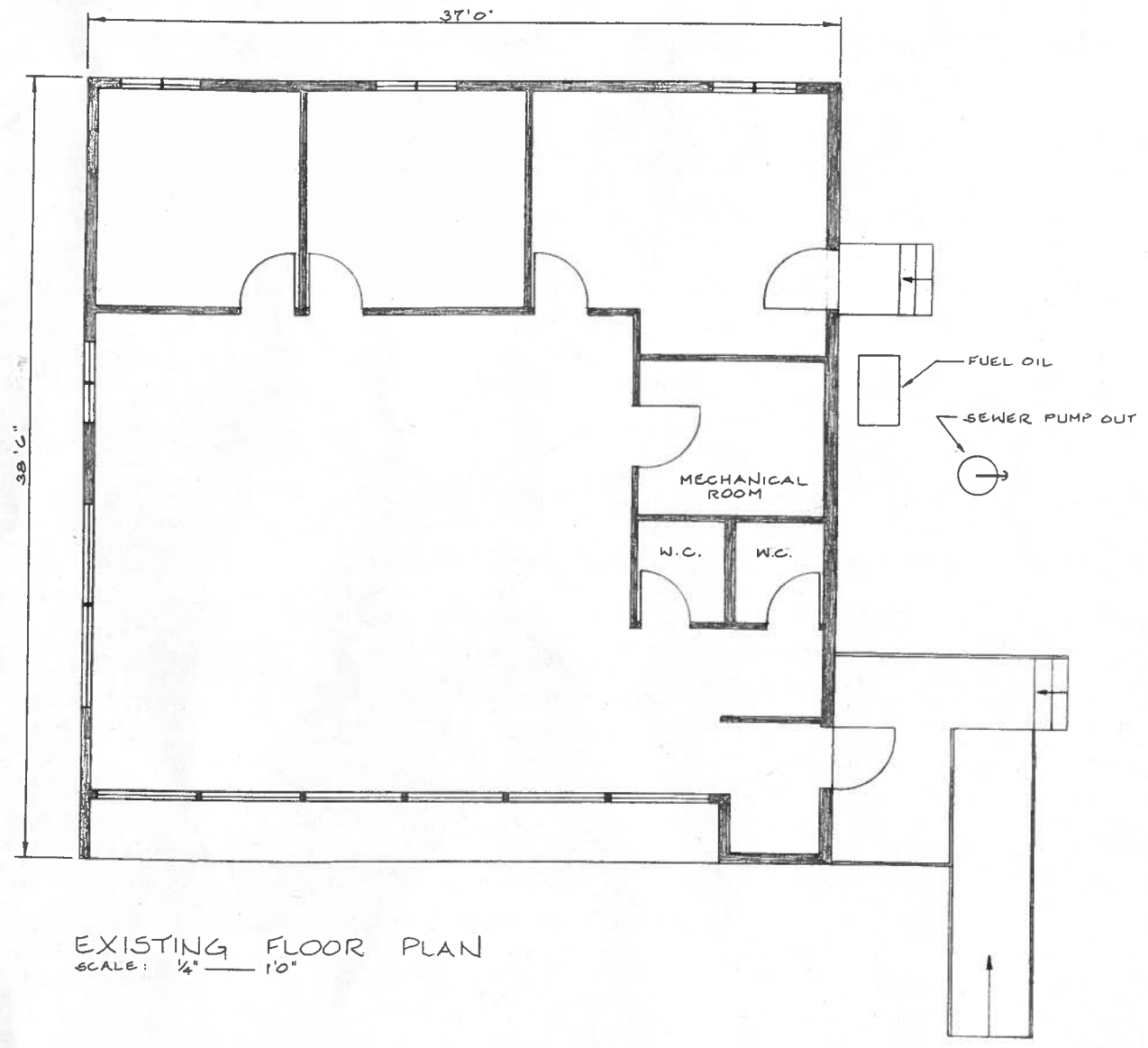
JIM MARKOW

14 CAMERON CRESCENT, HAY RIVER, NT.

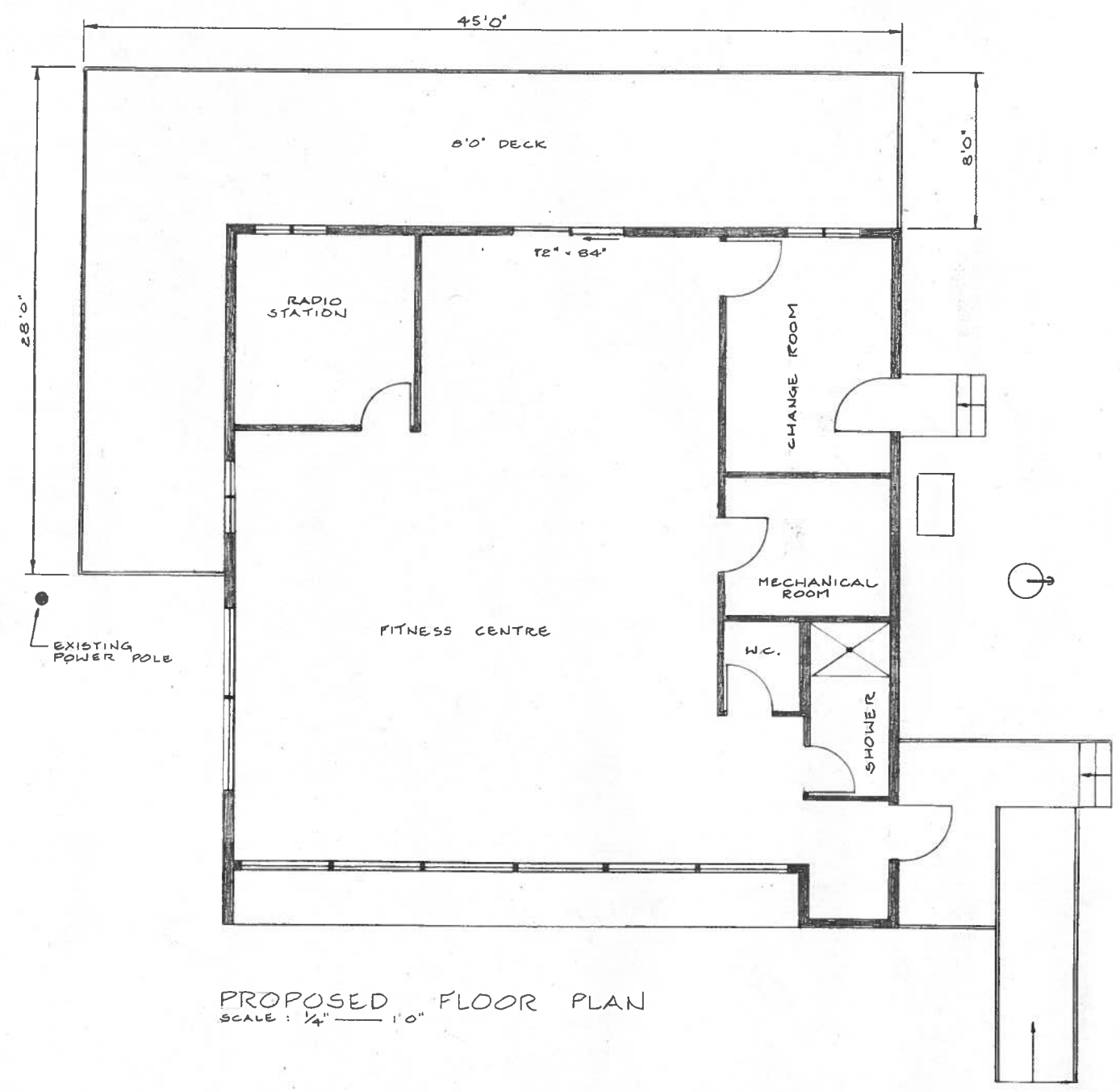
DESIGN BY J.M.	JOB NO.	CLIENT HAMLET OF ENTERPRISE	TITLE DISCUSSION DRAWING
DRAWN BY J.M.	DATE APRIL 27/23	PROJECT RUNNING CREEK DAY PARK	SHEET 1 OF 1
APPROVED	SCALE AS NOTED		DRAWING NUMBER 1
NO. DATE BY REVISION APPD			REVISION A

NEW ITEM

10' x 10' METAL SHED ON SKIDS



EXISTING FLOOR PLAN
SCALE: 1/4" = 1'0"



PROPOSED FLOOR PLAN
SCALE: 1/4" = 1'0"

NEW ITEM

HAMLET OF ENTERPRISE
526 Robin Road
Enterprise, NT, X0E 0R1



REQUEST FOR DECISION

DATE	SUBJECT	PREPARED BY
May 11, 2023	Vehicle Quotes	Blair Porter

RECOMMENDATION

That Council make a motion to purchase a Public Works truck and an Administration vehicle.

CONCEPT

Public Works needs a new vehicle to replace the old F150 that has run its course. The quotes provided are for a close to base model that would cover the needs of the Public Works department.

Administration needs a vehicle for trips into Hay River for both Administration and Recreation to do necessary Hamlet business and not use their personal vehicles for such. The quotes provided are for a mid-size SUV that would have enough room to carry supplies and still provide reasonable fuel economy.

RELEVANT DOCUMENTATION

Attached quotes and comparison spreadsheet

OPTIONS

1. Purchase the Ford models, either from Hay River or Peace River.
2. Purchase the Dodge models from Aurora Dodge in Yellowknife.
3. Purchase the GMC models from Yellowknife Motors in Yellowknife.

PREFERRED OPTION: #1

Vehicle comparison					
Make	Model	Year	Features	Availability	Price
Ford (Hay River)	Explorer XLT	2023	V6, 4WD	Factory order	53,235
	Explorer Hybrid	2023	Hybrid engine, 4WD, tow package	Factory order	64,425
	F150 XLT	2023	V6 Ecoboost, 4X4, Super Crew, tow package	mid June	67,445
	F150 XLT	2023	V6 Ecoboost, 4X4, Super Crew, tow package, power seats, off-road package	in stock	71,265
	F150 Hybrid	2023	Hybrid engine, 4X4, Super Crew, tow package	in stock	75,665
Ford (Peace River)	Explorer XLT	2023	V6, 4WD	Factory order	53,244
	Explorer Hybrid	2023	Hybrid engine, 4WD, tow package	Factory order	61,294
	F150 XLT	2023	V6 Ecoboost, 4X4, Super Crew, tow package	in stock	61,043
Dodge	Cherokee Altitude	2023	4X4, Arctic package	in stock	54,083
	Ram 1500	2023	V6, 4X4, Crew Cab, Arctic package	in stock	60,218
	Ram 1500	2023	V8 Hemi, 4X4, Crew Cab, Arctic package	in stock	63,408
Chevrolet	Traverse LT	2023	AWD, V6, Block heater, remote start	en route	49,772
	GMC Sierra 1500	2023	V8, 4WD, Crew Cab, Standard box, tow package	in stock	64,667

Hamlet of Enterprise

*Ford quotes – Hay
River*



2023 Explorer XLT V6
(Factory Order)

Preview Order C999 - K8D XLT 4WD: Order Summary Time of Preview: 04/18/2023 13:35:13 Receipt: NA

Dealership Name: Aurora Ford

Sales Code : CB6352

Dealer Rep.	Cindy Orr	Type	Retail	Vehicle Line	Explorer	Order Code	C999
Customer Name	. Hamlet of Enterpris	Priority Code	19	Model Year	2023	Price Level	340

DESCRIPTION	MSRP	DESCRIPTION	MSRP
K8D0 EXPLORER XLT 4WD	\$48340	50 STATE EMISSIONS	\$0
2023 MODEL YEAR	\$0	HEATED STEERING WHEEL	\$0
FEDERAL EXCISE TAX	\$100	PARTIAL GAS FILL	\$0
TOTAL BASE VEHICLE	\$48440	FRONT LICENSE PLATE BRACKET	\$0
ICONIC SILVER	\$0	*****	\$0
ACTIVEX SEAT MATERIAL	\$0	*"THIS VEH. NOT INTENDED FOR *	\$0
EBONY BLACK INTERIOR	\$0	* SALE OR REGISTRATION IN US**	\$0
EQUIPMENT GROUP 202A	\$2000	* RETAIL PRICES EXCLUDE *	\$0
.REMOTE START SYSTEM	\$0	* GST/HST *	\$0
.8-WAY POWER PASSENGER SEAT	\$0	*****	\$0
.2.3L ECOBOOST I-4 ENGINE	\$0		\$0
.10-SPEED AUTO TRANSMISSION	\$0	U.S. GAL FUEL CHARGE	\$0
FLR LNERS RW 1&2/NO CRPET MAT	\$200	FDAF ASSESSMENT	\$0
2ND ROW 35/30/35 BECH W/ARMRST	\$500	DESTINATION & DELIVERY	\$2095
TOTAL BASE AND OPTIONS			MSRP \$53235
DISCOUNTS			NA
TOTAL			\$53235

Customer Name:
Customer Address:

Customer Email:

Customer Phone:

Customer Signature

Date

This order has not been submitted to the order bank.

This is not an invoice.



2023 Explorer Hybrid
(Factory Order)

Preview Order C999 - K8F Limited 4WD: Order Summary Time of Preview: 04/18/2023 11:35:59 Receipt: NA

Dealership Name: Aurora Ford

Sales Code : CB6352

Dealer Rep.	Cindy Orr	Type	Retail	Vehicle Line	Explorer	Order Code	C999
Customer Name	. Hamlet of Enterpris	Priority Code	19	Model Year	2023	Price Level	340

DESCRIPTION	MSRP	DESCRIPTION	MSRP
K8FO EXPLORER LIMITED 4WD	\$59830	LIMITED TECHNOLOGY PACKAGE	\$1000
2023 MODEL YEAR	\$0	.B&O SOUND SYTEM W/14 SPEAKERS	\$0
FEDERAL EXCISE TAX	\$100	.10.1" LCD TOUCHSCREEN	\$0
TOTAL BASE VEHICLE	\$59930	PARTIAL GAS FILL	\$0
ICONIC SILVER	\$0	FRONT LICENSE PLATE BRACKET	\$0
LEATHER SEATING SURFACES	\$0	*****	\$0
EBONY BLACK INTERIOR	\$0	**THIS VEH. NOT INTENDEd FOR *	\$0
EQUIPMENT GROUP 310A	\$0	* SALE OR REGISTRATION IN US**	\$0
.20" 10-SPOKE ALUMINUM WHEELS	\$0	* RETAIL PRICES EXCLUDE *	\$0
.3.3L HYBRID ENGINE	\$0	* GST/HST *	\$0
.10-SP MODULR HYBRD AUTO TRN	\$0	*****	\$0
.P255/55R20 A/S BSW TIRES	\$0		\$0
FLR LNERS RW 1&2/NO CRPET MAT	\$200	U.S. GAL FUEL CHARGE	\$0
2ND ROW 35/30/35 BECH W/ARMRST	\$500	FDAF ASSESSMENT	\$0
50 STATE EMISSIONS	\$0	DESTINATION & DELIVERY	\$2095
TRAILER TOW PKG CLASS IV	\$700		
TOTAL BASE AND OPTIONS			MSRP \$64425
DISCOUNTS			NA
TOTAL			\$64425

Customer Name:
Customer Address:

Customer Email:
Customer Phone:

Customer Signature _____ Date _____

*This order has not been submitted to the order bank.
This is not an invoice.*

2023 F150 Hybrid (instock)

DRB-000340

9-NORMAL, NE, 100340, PA311 7088

220230209 7915

ULT CERT CERT CERT TRD RAMP BUMP CAMP BOOK EXFL ROTA

011836 2145/2212 1FTFW1ED2 PFA88275 NE GC16

VEHICLE DESCRIPTION

F-150

PF A88275



ford.ca

2023 F-150 4X4 SUPERCREW
157" WHEELBASE
3.5L POWERBOOST FULL-HYBRID
HEV 10-SPEED TRANSMISSION

EXTERIOR
- AVALANCHE
INTERIOR
- BLACK SPORT 40/CONSOLE/40

STANDARD EQUIPMENT

STANDARD EQUIPMENT INCLUDED AT NO EXTRA CHARGE IN THE BASE PRICE BELOW

EXTERIOR

- AUTO HIGH BEAMS
- DAYTIME RUNNING LIGHTS
- DEFROSTER, REAR W/PRIVACY
- EASY FUEL CAPLESS FILLER
- FOG LAMPS
- FULLY BOXED STEEL FRAME
- HEADLAMPS - AUTOLAMP (ON/OFF)
- MIRRORS, DUAL POWER
- PICKUP BOX TIE DOWN HOOKS
- POWER TAILGATE LOCK
- TAILGATE, REMOVABLE W/LOCK
- TOW HOOKS
- TRAILER SWAY CONTROL

INTERIOR

- TOUCH UP/DWN DRV/PASS WIN
- DOOR LOCKS, POWER
- GRAB HANDLES, DRV/PASS
- ILLUMINATED ENTRY
- OUTSIDE TEMP & COMPASS
- POWER POINT, FRONT
- STEERING WHEEL, TILT/TELES
- TACHOMETER
- VISORS, DUAL MIRRORS

FUNCTIONAL

- 4X4 SYSTEM, ESOF
- AUTO HOLD
- BLIS W/CROSS TRAFFIC
- DYNAMIC HITCH ASSIST
- FORDPASS CONNECT™
- LANE-KEEPING SYSTEM
- POST-COLLISION BRAKING
- PRE-COLLISION ASSIST W/AEB
- REAR VIEW CAMERA
- REMOTE KEYLESS ENTRY
- REVERSE BRAKE ASSIST
- REVERSE SENSING SYSTEM
- SELECTSHIFT™ AUTO, TRANS
- SHOCKS, HEAVY DUTY
- SYNC®4

SAFETY/SECURITY

- AIR BAGS, SIDE
- AIRBAGS, DRIVER & PASS
- PERIMETER ALARM
- ROLL STABILITY CONTROL
- SAFETY BELTS, ADJUSTABLE
- SOS POST CRASH ALERT SYST
- STOP LAMP, HIGH MOUNT CTR
- TIRE PRESSURE MONITOR SYS

WARRANTY

- 3 YR/60,000 KM BASIC
- 5 YEAR/100,000 KM POWERTRAIN
- ROADSIDE ASSISTANCE 24 HRS

INCLUDED ON THIS VEHICLE

(MSRP)*

EQUIPMENT GROUP 302A

6,040.00

- XLT SERIES
- BOXLINK CARGO SYSTEM
- ELECTRONIC AUTO TEMP CONTROL
- LED BOX LIGHTING
- LED SIDE-MIRROR SPOT LIGHTS
- POWER SLIDING REAR WINDOW
- REMOTE START SYSTEM

OPTIONAL EQUIPMENT/OTHER

- 2023 MODEL YEAR
- FEDERAL EXCISE TAX 100.00
- 3.5L POWERBOOST FULL-HYBRID HEV 10-SPEED TRANSMISSION 2,200.00
- 3.73 ELECTRONIC LOCK RR AXLE NO CHARGE
- 7350# GVWR PACKAGE NO CHARGE
- 50 STATE EMISSIONS NO CHARGE
- AUTO START-STOP REMOVAL NO CHARGE
- TRAILER TOW PACKAGE NO CHARGE
- INTEGRATED TRLR BRAKE CNTRL 360.00
- MIRROR MANUAL TELE W/PWR GLASS 1,000.00
- FX4 OFF ROAD PACKAGE
- SKID PLATES
- TAILGATE STEP 470.00
- SINGLE FUEL TANK NO CHARGE
- XLT SPORT PACKAGE 500.00
- .275/65R18 BSW ALL-TERRAIN
- .18" 6-SPOKE GLOSS BLACK WHEEL
- SPORT CLOTH 40/CONSOLE/40 NO CHARGE

PRICE INFORMATION

BASE PRICE \$62,900.00
TOTAL OPTIONS/OTHER 10,670.00
TOTAL VEHICLE & OPTIONS/OTHER DESTINATION & DELIVERY 73,570.00
2,095.00

***THIS VEH. NOT INTENDED FOR SALE OR REGISTRATION IN US* RETAIL PRICES EXCLUDE GST/HST**

RAMP ONE/TERMINAL UN	CA8G	TOTAL MSRP	\$75,665.00
RAMP TWO/TERMINAL DEUX	DEARBORN	* MANUFACTURER'S SUGGESTED RETAIL PRICE - MSRP	
METHOD OF TRANSP / MODE DE TRANSPORT	CONVOY	NOTE: THIS PRICE HAS BEEN DEVELOPED AS A GUIDE. DEALERS MAY SELL FOR LESS AND ARE NOT UNDER ANY OBLIGATION TO ACCEPT THIS SUGGESTED RETAIL PRICE.	
		ITEM #: B6-H07J Q/T 2	
		PA311 N RE 2X 330 000340 01 31 23	

Canada ENERGUIDE Gasoline Vehicle Véhicule à essence

Fuel Consumption / Consommation de carburant

combined/coombinée **10.4** L/100 km
city ville **10.5**
highway route **10.4**

Annual fuel COST
for an annual distance of 20,000 km, and an average fuel price of \$1.25 per litre
\$ 2 600
Coût annuel en carburant
pour une distance annuelle de 20,000 km, et un prix moyen du carburant de 1.25 \$ par litre

mi/gal **27**



Estimates are based on Government of Canada approved criteria and testing methods. Vehicle's actual fuel consumption will vary. / Estimations établies selon des méthodes d'essai et des critères approuvés par le gouvernement du Canada. La consommation de carburant réelle du véhicule variera.

For more information visit **vehicles.nrcan.gc.ca**

U.S. GOVERNMENT SAFETY RATINGS
COTES DE SECURITE DU GOUVERNEMENT AMERICAIN

Overall Vehicle Score / Cote globale du véhicule	Not Rated / Non coté
Frontal Crash / Collision frontale	Driver / Conducteur Not Rated / Non coté Passenger / Passager Not Rated / Non coté
Side Crash / Collision latérale	Front seat / Siège avant Not Rated / Non coté Rear seat / Siège arrière Not Rated / Non coté
Rollover / Capotage	★★★★

Star ratings range from 1 to 5 stars (*****), with 5 being the highest. Les cotes varient de 1 à 5 étoiles (*****), 5 étant la cote la plus élevée.

Source: U.S. National Highway Traffic Safety Administration
For more information / Pour de plus amples renseignements www.safercar.gov

FordPass Connect™

Download the FordPass™ app* and you can:

- Access Vehicle Control Features
- Remotely start, lock and unlock your vehicle.
- Locate your vehicle and check approximate fuel range.
- Receive vehicle health alerts.

Activate 4G LTE Wi-Fi Hotspot

- New vehicles include a 3-month or 3GB data (whichever comes first) Wi-Fi trial.
- Connect up to ten Wi-Fi-equipped devices.

The FordPass Connect™ modem is active and sending vehicle data (e.g., diagnostics) to Ford. See in-vehicle Settings for connectivity options.

Scan code not operational at this time

FOR PLANT USE ONLY

FORD PROTECT™ Continued Service Plan
In-Store Ford Protect! The only extended service plan fully backed by Ford and honored at every Ford dealership in the US and Canada. See your Ford dealer for additional details, or visit www.ford.ca for more information.

custom
Personalize your vehicle with Ford Custom Accessories. Genuine Ford Accessories are engineered for your vehicle and can be included under the Ford New Vehicle Limited Warranty. Certain conditions, limitations and exclusions apply. See your Dealer for details.

KAN-000261

9-NORMAL, NE, 200261, PB032 4711

220230211 7360

ULT CERT CERT CERT TRD RAMP RAMP CAMP BOOK EXPL ROTA

011927 785/1545 1FTFW1E81 PKD68764 NE GC16

VEHICLE DESCRIPTION

F-150

PK D68764



ford.ca

2023 F-150 4X4 SUPERCREW
157" WHEELBASE
3.5L V6 ECOBOOST ENGINE
ELECTRONIC 10-SPD AUTO

EXTERIOR
OXFORD WHITE
INTERIOR
DARK SLATE CLOTH 40/20/40

STANDARD EQUIPMENT

STANDARD EQUIPMENT INCLUDED AT NO EXTRA CHARGE IN THE BASE PRICE BELOW

EXTERIOR

- AUTO HIGH BEAMS
- DAYTIME RUNNING LIGHTS
- DEFROSTER, REAR W/PRIVACY
- EASY FUEL CAPLESS FILLER
- FOG LAMPS
- FULLY BOXED STEEL FRAME
- HEADLAMPS - AUTOLAMP (ON/OFF)
- MIRRORS, DUAL POWER
- PICKUP BOX TIE DOWN HOOKS
- POWER TAILGATE LOCK
- TAILGATE, REMOVABLE W/LOCK
- TOW HOOKS
- TRAILER SWAY CONTROL

INTERIOR

- 1 TOUCH UP/DWN DRV/PASS WIN
- DOOR LOCKS, POWER
- GRAB HANDLES, DRV/PASS
- ILLUMINATED ENTRY
- OUTSIDE TEMP & COMPASS
- POWER POINT, FRONT
- STEERING WHEEL, TILT/TELES
- TACHOMETER
- VISORS, DUAL MIRRORS

FUNCTIONAL

- 4X4 SYSTEM, ESOF
- AUTO HOLD
- BLIS W/CROSS TRAFFIC
- DYNAMIC HITCH ASSIST
- FORDPASS CONNECT™
- LANE-KEEPING SYSTEM
- POST-COLLISION BRAKING
- PRE-COLLISION ASSIST W/AEB
- REAR VIEW CAMERA
- REMOTE KEYLESS ENTRY
- REVERSE BRAKE ASSIST
- REVERSE SENSING SYSTEM
- SELECTSHIFT™ AUTO. TRANS
- SHOCKS, HEAVY DUTY
- SYNC®4

SAFETY/SECURITY

- AIR BAGS, SIDE
- AIRBAGS, DRIVER & PASS
- PERIMETER ALARM
- ROLL STABILITY CONTROL
- SAFETY BELTS, ADJUSTABLE
- SOS POST CRASH ALERT SYST
- STOP LAMP, HIGH MOUNT CTR
- TIRE PRESSURE MONITOR SYS

WARRANTY

- 3 YR/60,000 KM BASIC
- 5 YEAR/100,000 KM POWERTRAIN
- ROADSIDE ASSISTANCE 24 HRS

INCLUDED ON THIS VEHICLE

(MSRP)*

EQUIPMENT GROUP 300A

-XLT SERIES

OPTIONAL EQUIPMENT/OTHER

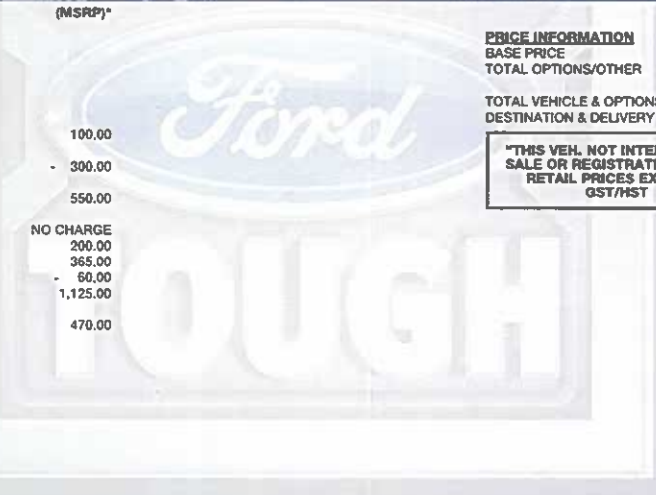
2023 MODEL YEAR	
FEDERAL EXCISE TAX	100.00
.17" SILVER PAINTED ALUMINUM	
3.5L V6 ECOBOOST ENGINE	300.00
.265/70R17 BSW ALL-TERRAIN	
3.31 ELECTRONIC LOCK RR AXLE	550.00
7150# GVWR PACKAGE	
50 STATE EMISSIONS	NO CHARGE
LINER-TRAY STYLE-NO CARPET MAT	200.00
400W OUTLET	365.00
AUTO START-STOP REMOVAL	60.00
TRAILER TOW PACKAGE	1,125.00
.INTEGRATED TRLR BRAKE CNTRL	
TAILGATE STEP	470.00
138 LITRE/ 36 GALLON FUEL TANK	

PRICE INFORMATION

BASE PRICE \$62,900.00
TOTAL OPTIONS/OTHER 2,450.00

TOTAL VEHICLE & OPTIONS/OTHER 65,350.00
DESTINATION & DELIVERY 2,095.00

"THIS VEH. NOT INTENDED FOR SALE OR REGISTRATION IN US" RETAIL PRICES EXCLUDE GST/HST



Canada ENERGY GUIDE Gasoline Vehicle VÉhicule à essence

Fuel Consumption / Consommation de carburant

	13.0 L/100 km	14.6 city ville	11.0 highway route
	combined/combinaée		
	22 mi/gal		

Annual fuel COST for an annual distance of 20,000 km, and an average fuel price of \$1.25 per litre
\$ 2 080

Coût annuel en carburant pour une distance annuelle de 20 000 km, et un prix moyen du carburant de 1.25 \$ par litre

Standard pickup trucks range from / Les camionnettes ordinaires font entre 8.9 - 19.8 L₁₀/100 km

Carbon Dioxide Rating / Indice de dioxyde de carbone: 1 (Best/Meilleur) 10

Smog Rating / Indice de Smog: 6 (Best/Meilleur) 10

Estimates are based on Government of Canada approval criteria and testing methods. Vehicle's actual fuel consumption will vary.

For more information visit vehicles.nrcan.gc.ca

U.S. GOVERNMENT SAFETY RATINGS / COTES DE SECURITE DU GOUVERNEMENT AMERICAIN

Overall Vehicle Score / Cote globale du véhicule	★★★★★
Frontal Crash / Collision frontale	★★★★★
Side Crash / Collision latérale	★★★★★
Rollover / Capotage	★★★★

Star ratings range from 1 to 5 stars (*****), with 5 being the highest. Les cotes varient de 1 à 5 étoiles (*****), 5 étant la cote la plus élevée.

Source: U.S. National Highway Traffic Safety Administration. For more information / Pour de plus amples renseignements www.safercar.gov

FordPass Connect

Download the FordPass™ app* and you can:
Access Vehicle Control Features
 • Remotely start, lock and unlock your vehicle.
 • Locate your vehicle and check approximate fuel range.
 • Receive vehicle health alerts.
Activate 4G LTE Wi-Fi Hotspot
 • New vehicles include a 3-month or 3GB data (whichever comes first) Wi-Fi trial.
 • Connect up to ten Wi-Fi-equipped devices.

The FordPass Connect™ modem is active and sending vehicle data (e.g., diagnostics) to Ford. See in-vehicle Settings for connectivity options.

RAMP ONE/TERMINAL UN		TOTAL MSRP \$67,445.00
CB8G		* MANUFACTURER'S SUGGESTED RETAIL PRICE - MSRP
RAMP TWO/TERMINAL DEUX	FINAL ASSEMBLY PLANT/USINE DE MONTAGE KANSAS CITY	* NOTE: THIS PRICE HAS BEEN DEVELOPED AS A GUIDE. DEALERS MAY SELL FOR LESS AND ARE NOT UNDER ANY OBLIGATION TO ACCEPT THIS SUGGESTED RETAIL PRICE.
METHOD OF TRANSPORT / MODE DE TRANSPORT	ITEM #: B6-H02Z O/T 2	
CONVOY	PB032 N RE 2X 330 000261 02 03 23	

Barcode: 1FTFW1E81PKD68764

Scan code not operational at this time
FOR PLANT USE ONLY

Personalize your vehicle with Ford Custom Accessories. Genuine Ford Accessories are engineered for your vehicle and can be included under the Ford New Vehicle Limited Warranty. Certain conditions, limitations and exclusions apply. See your Dealer for details.

2202302117360

05/11/2023

23T75

Inbound: ETA - Early/mid June

DRB-000730

9-NORMAL, NE, 100730, PB151 6123

220230225 1206

ULT CERT CERT CERT TRD RAMP BUMP CAMP BOOK EXFL ROTA

012143 1206/1780 1FTFW1E89 PFB03423 NE GC16

VEHICLE DESCRIPTION

F-150

PF **B03423**



ford.ca

2023 F-150 4X4 SUPERCREW
157" WHEELBASE
3.5L V6 ECOBOOST ENGINE
ELECTRONIC 10-SPD AUTO

EXTERIOR OXFORD WHITE
INTERIOR DARK SLATE CLOTH 40CONSLE40

STANDARD EQUIPMENT

STANDARD EQUIPMENT INCLUDED AT NO EXTRA CHARGE IN THE BASE PRICE BELOW

EXTERIOR

- AUTO HIGH BEAMS
- DAYTIME RUNNING LIGHTS
- DEFROSTER, REAR W/PRIVACY
- EASY FUEL CAPLESS FILLER
- FOG LAMPS
- FULLY BOXED STEEL FRAME
- HEADLAMPS - AUTOLAMP (ON/OFF)
- PICKUP BOX TIE DOWN HOOKS
- POWER TAILGATE LOCK
- TAILGATE, REMOVABLE W/LOCK
- TOW HOOKS
- TRAILER SWAY CONTROL

INTERIOR

- 1 TOUCH UP/DWN DRV/PASS WIN
- DOOR LOCKS, POWER
- GRAB HANDLES, DRV/PASS
- ILLUMINATED ENTRY
- OUTSIDE TEMP & COMPASS
- POWER POINT, FRONT
- STEERING WHEEL, TILT/TELES
- TACHOMETER
- VISORS, DUAL MIRRORS

FUNCTIONAL

- 4X4 SYSTEM, ESOF
- AUTO HOLD
- BLIS W/CROSS TRAFFIC
- DYNAMIC HITCH ASSIST
- FORDPASS CONNECT™
- LANE-KEEPING SYSTEM
- POST-COLLISION BRAKING
- PRE-COLLISION ASSIST W/AEB
- REAR VIEW CAMERA
- REMOTE KEYLESS ENTRY
- REVERSE BRAKE ASSIST
- REVERSE SENSING SYSTEM
- SELECTSHIFT™ AUTO, TRANS
- SHOCKS, HEAVY DUTY
- SYNCR4

SAFETY/SECURITY

- AIR BAGS, SIDE
- AIRBAGS, DRIVER & PASS
- PERIMETER ALARM
- ROLL STABILITY CONTROL
- SAFETY BELTS, ADJUSTABLE
- SOS POST CRASH ALERT SYST
- STOP LAMP, HIGH MOUNT CTR
- TIRE PRESSURE MONITOR SYS

WARRANTY
• 3 YR/60,000 KM BASIC
• 5 YEAR/100,000 KM POWERTRAIN
ROADSIDE ASSISTANCE 24 HRS

INCLUDED ON THIS VEHICLE

(MSRP)*

EQUIPMENT GROUP 301A

2,180.00

- XLT SERIES
- BOXLINK CARGO SYSTEM
- ELECTRONIC AUTO TEMP CONTROL
- 8-WAY POWER DRIVERS SEAT

OPTIONAL EQUIPMENT/OTHER

2023 MODEL YEAR	100.00
FEDERAL EXCISE TAX	- 300.00
3.5L V6 ECOBOOST ENGINE	1,000.00
275/60R-20 BSW ALL-TERRAIN	NO CHARGE
3.31 ELECTRONIC LOCK RR AXLE	NO CHARGE
7150# GVWR PACKAGE	NO CHARGE
50 STATE EMISSIONS	200.00
LINER-TRAY STYLE-NO CARPET MAT	365.00
400W OUTLET	- 60.00
AUTO START-STOP REMOVAL	1,125.00
TRAILER TOW PACKAGE	1,000.00
INTEGRATED TRLR BRAKE CNTRL	NO CHARGE
FX4 OFF ROAD PACKAGE	280.00
SKID PLATES	380.00
20" 6-SPOKE MAGNETIC PKT WHLS	NO CHARGE
136 LITRE/36 GALLON FUEL TANK	
LED BOX LIGHTING	
CLOTH BUCKET SEATS W/ CONSOLE	

PRICE INFORMATION

BASE PRICE \$62,900.00
TOTAL OPTIONS/OTHER 6,270.00

TOTAL VEHICLE & OPTIONS/OTHER \$69,170.00
DESTINATION & DELIVERY 2,095.00

"THIS VEH. NOT INTENDED FOR SALE OR REGISTRATION IN US"
RETAIL PRICES EXCLUDE GST/HST

Canada

ENERGUIDE



Gasoline Vehicle
Véhicule à essence

Fuel Consumption / Consommation de carburant

13.0 L/100 km
combined/combinée

14.6 L/100 km
city/ville

11.0 L/100 km
highway/route

22 mi/gal

Annual fuel cost
for an annual distance of 20,000 km, and an average fuel price of \$1.25 per litre

\$ 2 080

Coût annuel en carburant
pour une distance annuelle de 20 000 km, et un prix moyen du carburant de 1,25 \$ par litre

Standard pickup trucks range from /
Les camionnettes ordinaires font entre

8.9 - 19.8 L/100 km

L is gasoline litre equivalent
L signifie litre équivalent d'essence

Carbon Dioxide Rating / Indice de dioxyde de carbone

1 Best/milleur

Smog Rating / Indice de Smog

6 Best/milleur

Tailpipe emissions only / Émissions du tuyau d'échappement seulement

Estimates are based on Government of Canada approved criteria and testing methods. Vehicle's actual fuel consumption will vary.

Estimations établies selon des méthodes d'essai et des critères approuvés par le gouvernement du Canada. La consommation de carburant réelle du véhicule variera.

For more information visit

vehicles.nrcan.gc.ca

Pour plus d'informations visitez

vehicules.nrcan.gc.ca



U.S. GOVERNMENT SAFETY RATINGS
CÔTÉS DE SÉCURITÉ DU GOUVERNEMENT AMÉRICAIN

Overall Vehicle Score /
Cote globale du véhicule

★★★★★

Frontal Crash
Collision frontale

Driver / Conducteur
Passenger / Passager

★★★★★
★★★★★

Side Crash
Collision latérale

Front seat / Siège avant
Rear seat / Siège arrière

★★★★★
★★★★★

Rollover / Capotage

★★★★★

Star ratings range from 1 to 5 stars (*****), with 5 being the highest.
Les cotes varient de 1 à 5 étoiles (*****), 5 étant la cote la plus élevée.

Source: U.S. National Highway Traffic Safety Administration
For more information / Pour de plus amples renseignements
www.safercar.gov

FordPass Connect

Download the FordPass™ app* and you can:

- Access Vehicle Control Features
- Remotely start, lock and unlock your vehicle.
- Locate your vehicle and check approximate fuel range.
- Receive vehicle health alerts.

- Activate 4G LTE Wi-Fi Hotspot
- New vehicles include a 3-month or 3GB data (whichever comes first) Wi-Fi trial.
- Connect up to ten Wi-Fi-equipped devices.

*Compatible with select smartphones. FordPass Connect™ service requires an app, login to view information. Connected services and capabilities are subject to third party compatibility. Wi-Fi network available. Android and iOS operating systems only. Performance and availability of communications services varies by location. Connecting devices from the same network may result in slower speeds for other devices on that network.

The FordPass Connect™ modem is active and sending vehicle data (e.g., diagnostics) to Ford. See in-vehicle Settings for connectivity options.



Scan code not operational at this time

FOR PLANT USE ONLY



1FTFW1E89PFB03423



FORD PROTECT
Continued Service Plan

Based on Ford Protect!™. The only extended service plan fully backed by Ford and honored at every Ford dealership in the US and Canada. See your Ford dealer for additional details, or visit www.ford.ca for more information.



Personalize your vehicle with Ford Custom Accessories. Genuine Ford Accessories are engineered for your vehicle and can be included under the Ford New Vehicle Limited Warranty. Certain conditions, limitations and exclusions apply. See your Dealer for details.

05/11/2023

2202302251206

23T100
In Stock

Hamlet of Enterprise

*Ford quotes –
Peace River*

sao@enterprise-nt.ca

From: Jennine Wald <jwald@goauto.ca>
Sent: May 11, 2023 4:22 PM
To: sao@enterprise-nt.ca
Subject: Fw: quote
Attachments: [Untitled].pdf

Good afternoon Blair,

I have attached the window stickers for the 3 models as requested. The F150 I have here in stock, the Explorers I would locate, I will go \$300 over cost to earn your business.

23LT5009 MSRP \$67470.00 sale price \$61043.00 plus fees and taxes

2023 Explorer XLT \$ MSRP \$57035.00 sale price \$53244.00 plus fees and taxes

2023 Explorer Limited Hybrid MSRP \$65750.00 sale price \$61294.00 plus fees and taxes

fees include

\$6.25 Amvic

\$100.00 Air tax

\$20.00 Tire tax

\$699.00 Anti-theft

\$598.00 Tire/ Rim Warranty

Let me know if you need any additional information.

Thank you for the opportunity.

Jennine Wald

Sales Manager

Office 780-624-3450

Peace River Ford Sales Inc.

9902-74 Street | Peace River AB | T8S 0A8

Bus: 800.362.1358 Fax: 780.617.8025

From: Go Auto Scanning <scanner@goauto.ca>

Sent: May 11, 2023 5:02 PM

To: Jennine Wald <jwald@goauto.ca>

Subject:

KAN-000990

9-NORMAL, NE, 200990, PB142 12854 220230221 5700

ULT CERT CERT CBRT TRD RAMP BUMPER CAMP BOOK EXPL ROTAT

012118 2141/3868

1FTFW1E80

PKD75009 NE

GC16

VEHICLE DESCRIPTION



ford.ca

F-150

2023 F-150 4X4 SUPERCREW 157" WHEELBASE 3.5L V6 ECOBOOST ENGINE ELECTRONIC 10-SPD AUTO

EXTERIOR OXFORD WHITE INTERIOR DARK SLATE CLOTH 40/20/40

PK D75009

STANDARD EQUIPMENT INCLUDED AT NO EXTRA CHARGE IN THE BASE PRICE BELOW

Table with 3 columns: EXTERIOR, INTERIOR, FUNCTIONAL, SAFETY/SECURITY, WARRANTY. Lists various vehicle features and options.

INCLUDED ON THIS VEHICLE (MSRP)*

Table listing additional equipment and their MSRP values, such as 'EQUIPMENT GROUP 300A' and 'OPTIONAL EQUIPMENT/OTHER'.

PRICE INFORMATION table showing BASE PRICE (\$62,900.00), TOTAL OPTIONS/OTHER (\$2,475.00), and TOTAL VEHICLE & OPTIONS/OTHER DESTINATION & DELIVERY (\$65,375.00).

THIS VEH. NOT INTENDED FOR SALE OR REGISTRATION IN US RETAIL PRICES EXCLUDE OSTRHS

Table with columns for RAMP/TERMINAL, TOTAL MSRP (\$67,470.00), and MANUFACTURER'S SUGGESTED RETAIL PRICE (MSRP) for Kansas City.

Canada ENERGUIDE Gasoline Vehicle section. Includes fuel consumption table (13.0 L/100 km combined), annual fuel cost (\$2,080), and carbon dioxide rating (5).

U.S. GOVERNMENT SAFETY RATINGS section. Shows Overall Vehicle Score of 5 stars and star ratings for Frontal, Side, and Rollover collisions.

FordPass Connect section. Promotes downloading the app for vehicle control features and provides QR code for more info.

Barcode and VIN (1FTFW1E80PKD75009) section.

Ford PROTECT and CUSTOM sections. Includes Ford Protect logo and information about customizing the vehicle.

05/11/2023

2202302215700

CHI-001023

9-NORMAL, NE, 101023, PA171

2084

120230124 2812

UCT CERT CERT CERT TRD RAMP BUMP CAMP BOOK EXE F ROTA

011558 1562/2180

LFMSK8DH0

PGA44885 NE

GC16



ford.ca

VEHICLE DESCRIPTION

EXPLORER

PG A44885

2023 4DR XLT EXPLORER 4WD
119" WHEELBASE
2.3L ECOBOOST I-4 ENGINE
10-SPEED AUTO TRANSMISSION

EXTERIOR
ICONIC SILVER
INTERIOR
EBONY/LT SLATE ACTIVEX SEAT

STANDARD EQUIPMENT

STANDARD EQUIPMENT INCLUDED AT NO EXTRA CHARGE IN THE BASE PRICE BELOW

EXTERIOR

- AUTO HIGH BEAMS
LED TAILLAMPS
MIRRORS, DUAL, POWER HEATED
PRIVACY GLASS, REAR
ROOF RAILS

INTERIOR

- AM/FM STEREO
GLOVE BOX, LOCKING
OUTSIDE TEMP & COMPASS
POWER POINTS, FR/REAR
SEAT, POWER DRIVER
SEAT, POWER PASSENGER
SEATS, HEATED FRONT
TILT/TELESCOPING LEATHER WRAPPED STEERING WHEEL

FUNCTIONAL

- A/C, TRI-ZONE ELECTRONIC
BLIS W/CROSS TRAFFIC
CRUISE CONTROL
EASY FUEL CAPLESS FILLER
ELEC PWR ASSIST STEERING
FORDPASS™ CONNECT
HILL START ASSIST
LANE KEEPING SYSTEM
MYKEY
PRE-COLLISION ASSIST W/AEB
REAR PARKING SENSORS
REVERSE CAMERA SYSTEM
SYNC® 3

SAFETY/SECURITY

- ADVANCETRAC™ w/ROLL STABILITY CONTROL
AIRBAGS, DRIVER & PASS
LATCH CHILD RESTRAINT SYS
PERIMETER ALARM
PERSONAL SAFETY SYSTEM™
SAFETY CANOPY
SOS POST CRASH ALERT SYST
TIRE PRESSURE MONITOR SYS

WARRANTY

- 3 YR/60,000 KM BASIC
5 YEAR/100,000 KM POWERTRAIN
ROADSIDE ASSISTANCE 24 HRS

INCLUDED ON THIS VEHICLE

(MSRP)*

EQUIPMENT GROUP 202A

2,000.00

- REMOTE START SYSTEM
8-WAY POWER PASSENGER SEAT

OPTIONAL EQUIPMENT/OTHER

- 2023 MODEL YEAR
FEDERAL EXCISE TAX 100.00
FLR LNERS/CARPET MATS/RWS 1&2 250.00
50 STATE EMISSIONS NO CHARGE
TRAILER TOW PKG CLASS IV 700.00
AUTO START-STOP REMOVAL 50.00
4G LTE WI-FI HOTSPOT CREDIT 25.00
HEATED STEERING WHEEL 1,250.00
FORD CO-PILOT360 ASSIST+
ADAPTIVE CRUISE CONTROL
VOICE-ACTV TOUCHSCREEN NAV SYS
EVASIVE STEERING ASSIST 2,000.00
XLT SPORT APPEARANCE PACKAGE
P255/55R20 A/S BSW TIRES
20" CRBN GRAY-PTD 10-SPK WHLs

DEALER INSTALLED OPTIONS

- ROOF RAIL CROSSBARS (WR - DEAL 385.00

PRICE INFORMATION

- BASE PRICE \$48,340.00
TOTAL OPTIONS/OTHER 6,600.00
TOTAL VEHICLE & OPTIONS/OTHER DESTINATION & DELIVERY 54,940.00
2,095.00

THIS VEH. NOT INTENDED FOR SALE OR REGISTRATION IN US RETAIL PRICES EXCLUDE GST/HST

Canada

ENERGUIDE



Gasoline Vehicle / Véhicule à essence

Fuel Consumption / Consommation de carburant

10.7 L/100 km combined/combinae
12.0 city ville
9.0 highway route
26 mil/gal

Annual fuel COST for an annual distance of 20,000 km, and an average fuel price of \$1.25 per litre

\$ 2 675

Coût annuel en carburant pour une distance annuelle de 20 000 km, et un prix moyen du carburant de 1,25 \$ par litre

Standard SUVs range from / Les VUS ordinaires font entre

2.3 - 16.9 L_e/100 km

L_e is gasoline litre equivalent / L_e signifie litre équivalent d'essence

Carbon Dioxide Rating / Indice de dioxyde de carbone



Smog Rating / Indice de Smog



Estimates are based on Government of Canada approved criteria and testing methods. Vehicle's actual fuel consumption will vary.

Estimations établies selon des méthodes d'essai et des critères approuvés par le gouvernement du Canada. La consommation de carburant réelle du véhicule variera.

For more information visit vehicles.nrcan.gc.ca

Pour plus d'information visitez vehicules.nrcan.gc.ca

U.S. GOVERNMENT SAFETY RATINGS / COTES DE SECURITE DU GOUVERNEMENT AMERICAIN

Overall Vehicle Score / Cote globale du véhicule

Not Rated / Non coté

Frontal Crash / Collision frontale: Driver / Conducteur, Passenger / Passager. Not Rated / Non coté

Side Crash / Collision latérale: Front seat / Siège avant, Rear seat / Siège arrière. ★★★★★

Rollover / Capotage: ★★★★★

Star ratings range from 1 to 5 stars (*****), with 5 being the highest. Les cotes varient de 1 à 5 étoiles (*****), 5 étant la cote la plus élevée.

Source: U.S. National Highway Traffic Safety Administration. For more information / Pour de plus amples renseignements www.safercar.gov

FordPass Connect

Download the FordPass® app and you can:

- Access Vehicle Control Features
Remotely start, lock, and unlock your vehicle.
Locate your vehicle and check approximate fuel range.
Receive vehicle health alerts.
Activate 4G LTE Wi-Fi Hotspot
New vehicles include a 3-month 3GB data (whichever comes first) Wi-Fi hot.
Connect up to ten Wi-Fi-equipped devices.

Use of the FordPass app to perform these functions requires an active internet connection. The FordPass app is available for download on the App Store and Google Play. For more information visit www.fordpass.com

The FordPass Connect™ system uses Wi-Fi and cellular technologies to provide remote access to vehicle services. Some features may require a compatible mobile device and internet connection. ©2023 Ford Motor Company. All rights reserved.



Scan code not operational at this time

FOR PLANT USE ONLY



FORD PROTECT

Join us first! Protect. The only extended warranty plan fully backed by Ford and honored on every Ford dealership in the US and Canada. See your Ford dealer for additional details, or visit www.fordca.com for more information.

custom accessories

Personalize your vehicle with Ford Custom Accessories. Genuine Ford Accessories are engineered for your vehicle and can be included under the Ford New Vehicle Limited Warranty. Certain conditions, limitations and exclusions apply. See your Dealer for details.

05/11/2023

1202301242812

VEHICLE DESCRIPTION

EXPLORER

PN **A02208**



ford.ca

2023 4DR LTD H EXPLORER 4WD
119" WHEELBASE
3.3L HYBRID ENGINE
10-SP MODULR HYBRD AUTO TRN

EXTERIOR
FORGED GREEN METALLIC
INTERIOR
EBONY LEATHER-TRIMMED SEATS

STANDARD EQUIPMENT
STANDARD EQUIPMENT INCLUDED AT NO EXTRA CHARGE IN THE BASE PRICE BELOW

EXTERIOR

- 360-DEGREE CAMERA
- AUTO HIGH BEAMS
- FOG LAMPS
- LED TAILLAMPS
- MIRRORS, DUAL POWER HEATED
- FOLDING W/MEM & SIGNAL
- PRIVACY GLASS, REAR
- RAIN SENSING WIPERS
- ROOF RAILS

INTERIOR

- 110V OUTLET
- AMBIENT LIGHTING
- B&O AUDIO SYSTEM
- GLOVE BOX, LOCKING
- POWER POINTS, FR/REAR
- SEAT, POWER DRIVER
- SEAT, POWER PASSENGER
- SEATS, FRONT HEATED/COOLED
- TILT/TELESCOPING LEATHER WRAPPED STEERING WHEEL
- UNIVERSAL GARAGE DOOR OPENER

FUNCTIONAL

- A/C, TRI-ZONE ELECTRONIC
- ADAPTIVE CRUISE CONTROL
- BLIS W/CROSS TRAFFIC
- ELEC PWR ASSIST STEERING
- FORDPASS™ CONNECT
- FRONT & REAR PARK SENSORS
- HEATED STEERING WHEEL
- LANE KEEPING SYSTEM
- PRE-COLLISION ASSIST W/AEB
- REMOTE KEYLESS ENTRY
- REMOTE VEHICLE START
- REVERSE CAMERA SYSTEM
- SYNC® 3
- VOICE-ACTIVATED NAVIGATION
- WIRELESS CHARGING PAD

SAFETY/SECURITY

- ADVANCETRAC™ W/ROLL-STABILITY CONTROL
- AIRBAGS, DRIVER & PASS
- LATCH CHILD RESTRAINT SYS
- PERIMETER ALARM
- PERSONAL SAFETY SYSTEM™
- SAFETY CANOPY
- SOS POST CRASH ALERT SYST
- TIRE PRESSURE MONITOR SYS

WARRANTY

- 3 YR/60,000 KM BASIC
- 5YEAR/100,000 KM POWERTRAIN
- ROADSIDE ASSISTANCE 24 HRS

INCLUDED ON THIS VEHICLE

(MSRP)*

EQUIPMENT GROUP 310A

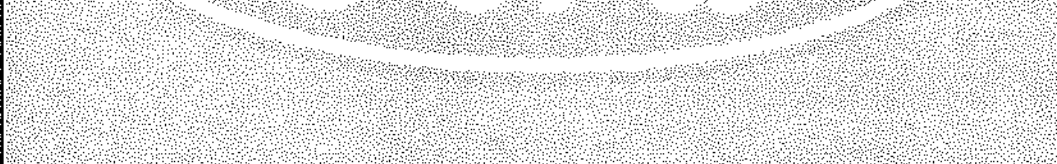
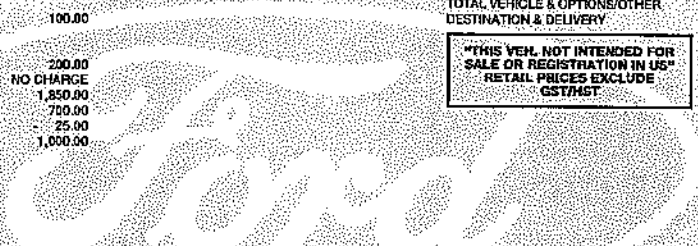
OPTIONAL EQUIPMENT/OTHER

- 2023 MODEL YEAR
- FEDERAL EXCISE TAX 100.00
- .20" 10-SPOKE ALUMINUM WHEELS
- .P235/55R20 A/S BSW TIRES
- FLR LNERS RW 1&2 NO CRPET MAT 200.00
- 50 STATE EMISSIONS NO CHARGE
- TWIN PANEL MOONROOF 1,850.00
- TRAILER TOW PKG CLASS IV 700.00
- 4G LTE WI-FI HOTSPOT CREDIT 25.00
- LIMITED TECHNOLOGY PACKAGE 1,000.00
- B&O SOUND SYSTEM W/14 SPEAKERS
- 10.1" LCD TOUCHSCREEN

PRICE INFORMATION

BASE PRICE	\$59,830.00
TOTAL OPTIONS/OTHER	3,625.00
TOTAL VEHICLE & OPTIONS/OTHER DESTINATION & DELIVERY	63,655.00
	2,095.00

THIS VEH. NOT INTENDED FOR SALE OR REGISTRATION IN US
RETAIL PRICES EXCLUDE GST/HST



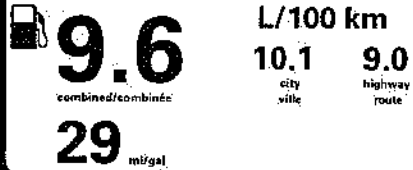
	RAMP ONE / TERMINAL UN CA8G		TOTAL MSRP \$65,750.00
	RAMP TWO / TERMINAL DEUX	FINAL ASSEMBLY PLANT / USINE DE MONTAGE CHICAGO SHO	* MANUFACTURER'S SUGGESTED RETAIL PRICE - MSRP NOTE: THIS PRICE HAS BEEN DEVELOPED AS A GUIDE. DEALERS MAY SELL FOR LESS AND ARE NOT UNDER ANY OBLIGATION TO ACCEPT THIS SUGGESTED RETAIL PRICE.
	METHOD OF TRAVEL / MODE DE TRANSPORT CONVOY	ITEM #: B6-Y42D Q/T 1	SPECIAL ORDER PA101 N RE 2X 335 000934 01 10 23



ENERGUIDE

Gasoline Vehicle / Véhicule à essence

Fuel Consumption / Consommation de carburant



Standard SUVs range from / Les VUS ordinaires font entre

2.3 - 16.9 L_e/100 km

L_e is gasoline litre equivalent / L_e signifie litre équivalent d'essence

Carbon Dioxide Rating / Indice de dioxyde de carbone



Tailpipe emissions only / Émissions du tuyau d'échappement seulement

Smog Rating / Indice de Smog



Estimates are based on Government of Canada approved criteria and testing methods. Vehicle's actual fuel consumption will vary.

Estimations établies selon des méthodes d'essai et des critères approuvés par le gouvernement du Canada. La consommation de carburant réelle du véhicule variera.

For more information visit vehicles.nrcan.gc.ca

Pour plus d'information visitez vehicules.nrcan.gc.ca



U.S. GOVERNMENT SAFETY RATINGS / COTES DE SECURITE DU GOUVERNEMENT AMERICAIN

Overall Vehicle Score / Cote globale du véhicule	Not Rated / Non coté	
Frontal Crash / Collision frontale	Driver / Conducteur Passenger / Passager	Not Rated / Non coté
Side Crash / Collision latérale	Front seat / Siège avant Rear seat / Siège arrière	★★★★★
Rollover / Capotage		★★★

Star ratings range from 1 to 5 stars (*****), with 5 being the highest. Les cotes varient de 1 à 5 étoiles (*****), 5 étant la cote la plus élevée.

Source: U.S. National Highway Traffic Safety Administration
For more information / Pour de plus amples renseignements
www.safercar.gov



1FM5K8FW6PNA02208

FordPass Connect

Download the FordPass™ app and you can:

- Access Vehicle Control Features:
 - Remotely start, lock and unlock your vehicle.
 - Locate your vehicle and check approximate fuel range.
 - Receive vehicle health alerts.
- Activate 4G LTE Wi-Fi Hotspot:
 - New vehicles include a 3-month trial 3GB data (whichever comes first) Wi-Fi trial.
 - Connect up to ten Wi-Fi-equipped devices.

*Connect up to 10 Wi-Fi-enabled devices. Download the FordPass™ app and you can: Access Vehicle Control Features: - Remotely start, lock and unlock your vehicle. - Locate your vehicle and check approximate fuel range. - Receive vehicle health alerts. Activate 4G LTE Wi-Fi Hotspot: - New vehicles include a 3-month trial 3GB data (whichever comes first) Wi-Fi trial. - Connect up to ten Wi-Fi-equipped devices.

The FordPass Connect™ system adds and activates the 4G LTE Wi-Fi Hotspot in the Ford Pass™ app. See your Dealer for more details.



Scan code not operational at this time

FOR PLANT USE ONLY



With the Ford Protect™ The only extended service plan fully backed by Ford or honored as a Ford deal through the US and Canada. See your Ford Dealer for address details, or visit www.ford.com/protect.



Personalize your vehicle with Ford Custom Accessories. Genuine Ford Accessories are engineered for your vehicle and can be included under the Ford New Vehicle Limited Warranty. Certain conditions, limitations and exclusions apply. See your Dealer for details.

Hamlet of Enterprise

Dodge quotes

A SPECIAL PRESENTATION FOR

HAMLET OF ENTERPRISE

DEAL NUMBER: 34724
CDK CUSTOMER NUMBER: 68866



340 Old Airport Road,
Yellowknife, NT X1A 3T3

(867) 873-4222
GoAuto.ca

YOUR NEXT VEHICLE

DEAL NUMBER: 34724 CDK CUSTOMER NUMBER: 68866



FIND IT AT:



340 Old Airport Road,
Yellowknife, NT X1A 3T3
PHONE: (867) 873-4222
goauto.ca

2023 Jeep Cherokee Altitude 4x4

Stock # 105771 VIN # 1C4PJMMB2PD105771 Odometer 1 KM

YOUR PRICE	2023 Jeep Cherokee	\$51,685
ACCESSORIES	Arctic Package	\$1,699
	Dealer Admin	\$699

DEALER INITIAL		CUSTOMER INITIAL	
-------------------	--	---------------------	--

SALE PRICE \$54,083

PAYMENT OPTIONS (OAC)

DEAL NUMBER: 34724 CDK CUSTOMER NUMBER: 68866

OPTION 1 Cash	
CASH	
\$56,788	
INITIAL	

DID YOU KNOW...

All of our loans are totally open ended and can be paid out at any time without penalty.

Lump sums can be applied at any time to reduce the amount owing and the overall interest on the loan.

OUR PROMISES (BE SPECIFIC)

YOUR PROMISES (BE SPECIFIC)

DEALER SIGNATURE		CUSTOMER SIGNATURE	
------------------	--	--------------------	--

COMPLIMENTARY BENEFITS

- Fixed Commission Sales
- No Extra Fees
- Go Card Rewards & Savings
- Free Service Loaners
- 24/7 Customer Service
- Go Insurance
- Go Finance

INCREDIBLE BUT TRUE REFERRAL PROGRAM

We had a very good experience and the staff was very helpful. I had to bring both my kids age 3 and 4 and the staff was very sweet to them. They got them balloons and hot chocolates. Also no one was pushy or pressuring us. We got referred by our parents to go to this dealership and I'm glad I took the referral – we got a great car and my parents got \$500 on their Go Card!

Benjamin

A SPECIAL PRESENTATION FOR

HAMLET OF ENTERPRISE

DEAL NUMBER: 34725
CDK CUSTOMER NUMBER: 68867



340 Old Airport Road,
Yellowknife, NT X1A 3T3

(867) 873-4222
GoAuto.ca

YOUR NEXT VEHICLE

DEAL NUMBER: 34725 CDK CUSTOMER NUMBER: 68867



FIND IT AT:



340 Old Airport Road,
Yellowknife, NT X1A 3T3
PHONE: (867) 873-4222
goauto.ca

2023 Ram 1500 Classic Express Express 4x4 Crew Cab 5'7" Box

Stock # 542476 VIN # 1C6RR7KG9P5542476 Odometer 1 KM

YOUR PRICE	2023 Ram 1500 Classic	\$61,820
ACCESSORIES	Arctic Package	\$1,699
	Dealer Admin	\$699
DISCOUNTS	Msrp Discount	\$4,000

DEALER INITIAL		CUSTOMER INITIAL	
----------------	--	------------------	--








SALE PRICE \$60,218

PAYMENT OPTIONS (OAC)

DEAL NUMBER: 34725 CDK CUSTOMER NUMBER: 68867

OPTION 1 Cash	
CASH	
\$63,229	
INITIAL	

COMPLIMENTARY BENEFITS

-  Fixed Commission Sales
-  No Extra Fees
-  Go Card Rewards & Savings
-  Free Service Loaners
-  24/7 Customer Service
-  Go Insurance
-  Go Finance

DID YOU KNOW...

All of our loans are totally open ended and can be paid out at any time without penalty.

Lump sums can be applied at any time to reduce the amount owing and the overall interest on the loan.

OUR PROMISES (BE SPECIFIC)

YOUR PROMISES (BE SPECIFIC)

INCREDIBLE BUT TRUE REFERRAL PROGRAM

We had a very good experience and the staff was very helpful. I had to bring both my kids age 3 and 4 and the staff was very sweet to them. They got them balloons and hot chocolates. Also no one was pushy or pressuring us. We got referred by our parents to go to this dealership and I'm glad I took the referral - we got a great car and my parents got \$500 on their Go Card!

Benjamin

DEALER SIGNATURE

CUSTOMER SIGNATURE

A SPECIAL PRESENTATION FOR

HAMLET OF ENTERPRISE

DEAL NUMBER: 34726
CDK CUSTOMER NUMBER: 68868



340 Old Airport Road,
Yellowknife, NT X1A 3T3

(867) 873-4222
GoAuto.ca

YOUR NEXT VEHICLE

DEAL NUMBER: 34726 CDK CUSTOMER NUMBER: 68868



YOUR NEXT VEHICLE
2023 Ram 1500 Classic

FIND IT AT:



340 Old Airport Road,
Yellowknife, NT X1A 3T3
PHONE: (867) 873-4222
goauto.ca

2023 Ram 1500 Classic Express Express 4x4 Crew Cab 5'7" Box

Stock # 572393 VIN # 3C6RR7KT6PG572393 Odometer 1 KM

YOUR PRICE	2023 Ram 1500 Classic	\$65,010
ACCESSORIES	Arctic Package	\$1,699
	Dealer Admin	\$699
DISCOUNTS	Msrp Discount	\$4,000

DEALER INITIAL		CUSTOMER INITIAL	
----------------	--	------------------	--

SALE PRICE \$63,408

PAYMENT OPTIONS (OAC)

DEAL NUMBER: 34726 CDK CUSTOMER NUMBER: 68868

OPTION 1 CASH	
CASH	
\$66,579	
INITIAL	

COMPLIMENTARY BENEFITS

- Fixed Commission Sales
- No Extra Fees
- Go Card Rewards & Savings
- Free Service Loaners
- 24/7 Customer Service
- Go Insurance
- Go Finance

DID YOU KNOW...

All of our loans are totally open ended and can be paid out at any time without penalty.

Lump sums can be applied at any time to reduce the amount owing and the overall interest on the loan.

OUR PROMISES (BE SPECIFIC)

YOUR PROMISES (BE SPECIFIC)

INCREDIBLE BUT TRUE
REFERRAL PROGRAM

We had a very good experience and the staff was very helpful. I had to bring both my kids age 3 and 4 and the staff was very sweet to them. They got them balloons and hot chocolates. Also no one was pushy or pressuring us. We got referred by our parents to go to this dealership and I'm glad I took the referral - we got a great car and my parents got \$500 on their Go Card!

Benjamin

DEALER SIGNATURE		CUSTOMER SIGNATURE	
------------------	--	--------------------	--

Hamlet of Enterprise

GMC quotes



(867) 766-5000

4808 49th Ave, Yellowknife, NT

www.yellowknifemotors.com

PURCHASER INFORMATION				
Hamlet of Enterprise				May 10, 2023
NAME	STOCK NUMBER	DEAL NUMBER	DATE	
526 Robin Road	Enterprise	NT	X0E0R1	
ADDRESS	CITY	PROVINCE	POSTAL CODE	
(867) 984-3491			sao@enterprise-nt.ca	
HOME PHONE	CELL PHONE	WORK PHONE	E-MAIL ADDRESS	SALESPERSON

NEW VEHICLE INFORMATION							
2023	Chevrolet	Traverse AWD 4DR WGN LT 1LT (1NW561LT)			1NW56		
YEAR	MAKE	MODEL	MODEL CODE	MILEAGE	COLOUR	VIN	

TRADE-IN INFORMATION					
YEAR	MAKE	MODEL	MILEAGE	COLOUR	VIN

VEHICLE PRICING - CASH	
Sales Amount	\$51,272.00
Before-Tax Rebates	\$1,500.00 -
Total After Tax	\$49,772.00

CUSTOMER APPROVAL

MANAGEMENT APPROVAL



OrderWORKBENCH

Order Detail - Order # CPBKGT

BAC: 272649

BFC: 1

Name: YELLOWKNIFE MOTORS

Current as of 05/10/2023 - 05:34 PM EDT

BAC Information

Contact Name:

Phone #:

DAN:

Stock No.:

Model/Order Information

Model Year: 2023

Division: GMCL-CHEVROLET

Distrib. Entity: RET

Order Type: TRE - Retail Stock

Allocation Group: TRAVRS

Model: 1NW56 - Traverse: LT or
RS AWD

TPW: 05/15/2023

MSRP †: \$48,478.00

MSRP w/DFC †: \$50,473.00

Estimated Delivery Date:

Vehicle Specifications

PEG: 1LT - 1LT Preferred Equipment Group

Trim: H1T - Interior Trim, Cloth Jet Black

Primary Color: GNT - Radiant Red Tintcoat

Engine: LFY - Engine, 3.6L 6 Cylinder

Emissions:

Transmission: M3V - Transmission, Automatic 9 Speed

Ordered Options:

ABE: Seating , 7-Passenger

AR9: Seats, front deluxe bucket

B26: Driver Alert Package I

B94: Black, front and rear bowties

BTV: Remote engine start

CAV: LPO: Integrated Cargo Liner

CTT: Hitch Guidance, Trailing

CWA: Rear Camera Mirror Washer

Assist Guidelines

DWK: Heated Outside Mirror, Manual

DRZ: Mirror, I/S, R/V, Lt.

Folding

Sensitive, Full Video Display

F48: All Wheel Drive, Driver Selectable

EPM: MODEL CONVERSION

IOS: Chevy Infotainment System 8" HD Color

ALL WHEEL DRIVE

Touchscreen Display

FE9: Federal Emissions

KA1: Heated Front Seats

K05: Engine Block Heater

PED: Chevrolet Safety Assist

PDF: LPO, All Weather Floor

PZ8: Image Adjustment Hitch View



OrderWORKBENCH

Liner Package

PRF: 3 Years of OnStar Remote

Access

PZW: Wheel, 18-inch (45.6 cm)

Bright Silver-painted aluminum

RIA: LPO, Accessory Floor

Liner, 1st and 2nd Row Floor

Liner

RTI: Wheel Spare 18" x 4.5"

TQ5: Intellibeam Headlamps

UDD: Display Instrument Driver

Info, Enhanced

UFG: Rear Cross-Traffic Alert

UHY: Sensor Collision

Avoidance & Mitigation, Low

Speed

UKJ: Pedestrian Detection,

Front Basic

V08: Cooling System, HD

VQK: LPO: Moulded Splash

Guards

ZCD: Tire, Spare, T135/70R18

SL 104M, BW

QO5: Tire, 255/65R18 ALS

RIB: LPO, 3rd Row Floor Liner

TB5: Power Liftgate

UD7: Ultrasonic Rear Park Assist

UE1: OnStar

UG1: Universal Home Remote

UKC: Side Blind Zone Alert

UV2: HD Surround Vision

V92: Trailing Provisions

YM8: LPO Processing Option

ZL3: Convenience and Driver Confidence

Package

† North American Order Workbench is intended solely for business use by GMCL dealers. Pricing shown is for illustration purposes only and does not include GST/HST, provincial sales taxes, other applicable taxes, license fees or freight charges, unless otherwise indicated. Refer to GMCL's Vehicle Order Guide and/or vehicle invoice for official GMCL pricing. Prices and specifications are subject to change by GMCL at any time, without notice.



(867) 766-5000

4808 49th Ave, Yellowknife, NT

www.yellowknifemotors.com

PURCHASER INFORMATION					
Hamlet of Enterprise					May 10, 2023
NAME		STOCK NUMBER		DEAL NUMBER	DATE
526 Robin Road		Enterprise		NT	X0E0R1
ADDRESS		CITY		PROVINCE	POSTAL CODE
[867] 984-3491				sao@enterprise-nt.ca	
HOME PHONE	CELL PHONE	WORK PHONE	E-MAIL ADDRESS		SALESPERSON

NEW VEHICLE INFORMATION								
2023	GMC	Sierra 1500 MCM 4WD CREW CAB 1SA [TK107431SA]			TK10743			
YEAR	MAKE	MODEL			MODEL CODE	MILEAGE	COLOUR	VIN

TRADE-IN INFORMATION						
YEAR	MAKE	MODEL	MILEAGE	COLOUR	VIN	

VEHICLE PRICING - CASH	
Sales Amount	\$66,417.00
Before-Tax Rebates	\$1,000.00 -
After-Tax Rebates	\$750.00 -
Total After Tax	\$64,667.00

CUSTOMER APPROVAL

MANAGEMENT APPROVAL



Order Detail - Order # CCM SDF

BAC: 272649

BFC: 1

Name: YELLOWKNIFE MOTORS

Current as of 05/10/2023 - 05:28 PM EDT

---For Dealer Use Only---

BAC Information

Charge-to BAC: 272649

Charge-to BFC: 1

Ship-to BAC: 272649

Ship-to BFC: 1

Contact Name:

Phone #:

DAN: YKM

Stock No.:

Customer Information

Business Name:

GNWT

Phone:

Email:

Fleet Information

Primary FAN: 1462

End-User FAN:

Bid Number:

Bid Item #:

PO #: PO-113564

Model/Order Information

Model Year: 2023

Division: GMCL-GMC

Distrib. Entity: FLT

Order Type: FBN - GMCL -

Government with CA

Allocation Group: LDSIER

Model: TK10743 - 1500 Sierra:

Crew Cab Standard Box,

4WD

Request ID: CCMSC7

MSRP †: \$63,523.00

MSRP w/DFC †: \$65,618.00

Invoice †: W/A

Invoice w/DFC †: W/A

Current Event: 4B00 - Bayed



Route:

Carrier:

Reason:

VIN: 1GTUUAED8PZ184066

Estimated Delivery Date: DELAYED

Vehicle Specifications

PEG: 1SA - Sierra Pro

Primary Color: GAZ - Summit White

Trim: H1T - 1SA-Cloth, Jet Black, Interior Trim

Engine: L84 - Engine: 5.3L, EcoTec3 V-8, DI,
Dynamic Fuel Mgt, V V T

Emissions:

Transmission: MHT - 10-Speed Automatic

Ordered Options: AKO: Glass, Deep Tinted

AY0: Airbags-frontal,front seat
side-impact and roof-rail

BG9: Floor Covering:
Rubberized Vinyl, Black

C5Y: 3221 kg (7100 lbs)

CGN: Bed Liner, Spray-on,
Black Textured Polyurea

E63: Body: Pick-Up Bed

G80: Locking Differential, Rear

IOR: GMC Infotainment System

K05: Engine Block Heater

K47: Air Cleaner, High Capacity

NQH: Transfer Case: Active, 2-
Speed, Autotrac, Rotary Dial

PCI: 1SA Convenience Package

PDI: Black Package

QDV: 265/70R-17, All Terrain,
Blackwall

QT5: Tailgate Function--Manual
w/ Assist, Pwr Release

T8Z: Buckle-To-Drive

U2K: SiriusXM Satellite Radio
(subscription)

UE4: Following Distance
Indicator

AU3: Power Door Locks

AZ3: Seats: Front 40/20/40 Split-Bench,
Full Feature

C49: Defogger, Rear Window Electric
C67:

DLF: Mirrors, O/S: Power, Heated

FE9: Federal Emissions

GU5: 3.23 Ratio

JL1: Integrated Trailer Brake Controller

K34: Cruise Control

KW7: Alternator, 170 AMP

NZZ: Skid Plates

PCR: Elevation Convenience Package

PEB: Sierra Value Package

QK1: Standard Tailgate

RD6: Wheels: 17" Steel - Painted Silver

TQ5: Headlight System: Intellibeam Auto
Beam Ctrl

UE1: OnStar Communication System

UEU: Sensor, Forward Collision Alert

UHX: Lane Keep Assist/Departure Warning

UKJ: Sensor, Front Pedestrian Braking

V46: Bumper, Front, Chrome

VJH: Bumper, Rear, Chrome Step

VQO: LPO - Assist Steps, Work, Black

XCQ: Tire, Spare: 265/70 R17 All Season,



OrderWORKBENCH

UF2: Lighting, Cargo Box, LED

Blackwall

UHY: Automatic Emergency

Z82: Trailering Special Equipment

Braking

UVB: Rear Vision Camera, HD

V76: Recovery Hooks

VQK: LPO - Splash Guards,

Molded, Front & Back, Black

X31: Off-Road Package

YM8: LPO Processing Option

† North American Order Workbench is intended solely for business use by GMCL dealers. Pricing shown is for illustration purposes only and does not include GST/HST, provincial sales taxes, other applicable taxes, license fees or freight charges, unless otherwise indicated. Refer to GMCL's Vehicle Order Guide and/or vehicle invoice for official GMCL pricing. Prices and specifications are subject to change by GMCL at any time, without notice.

NEW ITEM



REQUEST FOR DECISION

DATE	SUBJECT	PREPARED BY
May 11, 2023	New Hamlet Office	Blair Porter

RECOMMENDATION

That Council make a motion to reengage with Taylor Architecture Group to adjust the original plans for the New Hamlet Office to be an addition to the Community Hall.

CONCEPT

The previous plans for the New Hamlet Office were to build onto the old weigh scale station, however it was determined that the cost of construction was over budget and therefore the project was tabled until 2025 as per Motion #2022-044. An inquiry was made to MACA regarding whether or not the scope of the project could be changed to be an addition to the Community Hall without having to go through the entire procurement process from the beginning again. It was also asked whether the federal funding that was used for the project would have to be repaid due to the change in scope.

We received an affirmative answer that, yes we could change the scope of the project without having to start over and the federal funding would not need to be repaid as a result. What is needed is a motion from Council to reengage with TAG about design modification, as well as a discussion about whether a geotechnical study is necessary for the grounds beside the Community Hall.

RELEVANT DOCUMENTATION

February 1, 2022 minutes

OPTIONS

1. Reengage with TAG to adjust the design to be attached to the Community Hall.
2. Start from scratch by sending out RFP for design of addition.
3. Cancel the project altogether, which would result in having to pay back \$125K in federal funding, plus the loss of several hundred thousand dollars in architectural fees.

PREFERRED OPTION: #1

NEW ITEM



REQUEST FOR DECISION

DATE	SUBJECT	PREPARED BY
May 11, 2023	Employee Benefits	Blair Porter

RECOMMENDATION

That Council make a motion to set up Employee Benefits in the form of a Canada Life basic benefits package along with a Canada Life visa benefits fund, as well as a pension plan in the form of a Group Registered Savings Plan with RBC Royal Bank.

CONCEPT

After employees raised concerns about the previous benefits package administered by NEBS, we researched several options for benefit packages and pension plans. After discussion with staff about the options, they recommended going with the Canada Life benefits package and the RBC GRSP, as those were those plans offered the best options, coverage, and flexibility that staff needs.

The options for the GRSP are as follows:

RBC GRSP		
Employee Cont	Employer Cont.	Admin costs
3% gross	matching	0
5% gross	matching	0
8% gross	matching	0

RELEVANT DOCUMENTATION

Canada Life plan summary (attached) & rate sheet (to follow as soon as we receive quote)
RBC program sheet (attached)

OPTIONS

1. Approve the benefits package from Canada Life and the GRSP through RBC.
2. Continue looking for other options.
3. Cancel employee benefits.

PREFERRED OPTION: #1

Plan Design Summary

Class 1: All other employees

Class 2: Councillors with Honorariums

Eligibility

- Following 3-months of continuous employment for all benefits
- You must work an average of at least 20-hours per week

Employee Life Insurance

- Benefit:
 - Class 1: 100% of annual earnings
 - Class 2: Flat \$50,000 of insured coverage
- Reduces by 50% at age 65
- 31-day conversion privilege
- The premium will be waived if, after 6-months, you cannot do your own or any other job due to disability

Accidental Death & Dismemberment (AD&D)

- Equal to the Employee Life Insurance Benefit
 - In the event of quadriplegia, Paraplegia, or hemiplegia, the benefit payable is 100% of the Employee Life Insurance Benefit

Dependent Life Insurance

- Benefit:
 - Spouse: \$10,000
 - Child: \$5,000 (if unmarried and underage 21 or a full-time student underage 25; coverage begins on the 15th day of life)
- Waiver of premium - same as Life benefit

Short Term Disability

- Benefit:
 - 66.67% of gross weekly earnings
 - Maximum of \$1,500 per week
- Pays immediately if disabled due to accident or hospitalization
- Pays after seven calendar days if disabled due to illness
- Payable for 17-weeks
- Non-taxable disability income

Long Term Disability

- Benefit:
 - 66.67% of gross monthly earnings
 - Coverage above a non-evidence maximum, to a maximum of \$10,000 requires proof of health
- Benefits begin after 17-weeks of continuous disability
- Pre-existing conditions 90-days/1-year
- Payable to recovery or age 65
- Two-year own occupation disability definition
For the first 24-months following the waiting period, members are considered to be disabled if they cannot perform the essential duties of their OWN OCCUPATION. After the initial 24-months, benefits will continue if the member's disability prevents them from being gainfully employed in ANY OCCUPATION that provides the member with an income of at least 50% of the indexed pre-disability monthly earnings.
- Primary CPP offset
- Non-taxable disability income
- Terminates at the earlier of retirement or age 65



Plan Design Summary

Drug Plan

- No deductible
- Reimbursement:
 - 80% Pay Direct Drug Card for prescription drug expenses
 - Unlimited
- Mandatory Generic drug definition
- Excluding lifestyle drug products

Extended Health Care

- No deductible
- Reimbursement:
 - 100% coverage for all eligible expenses, subject to certain maximums
- Coverage includes, but is not limited to:
 - Semi-private hospital
 - Home nursing care
 - Orthopedic
 - Hearing aids
 - Virtual Health Care Services
 - Ambulance services

Emergency Medical Travel Insurance

- Benefit:
 - 60-days or less per trip
- Coverage of spouse and dependent children
- Ground ambulance
- Subsistence allowance
- Return to departure point
- Return of deceased

Survivor benefits

- In the event of death to an employee, the health, benefits continue for the surviving family members for a period of 24-months at no charge

Health Spending Account

- No deductible
- Reimbursement:
 - 100% coverage subject to an overall maximum
- Combined Maximum (all benefits):
 - As decided by employer per classification of employee
- Pays as submitted

- No deductible
- Coverage includes, but is not limited to:
 - Pharmacy
 - Extended Health Care
 - Paramedical services (massage/chiro/physio/etc.)
 - Vision Care
 - Dental Care (basic/major/orthodontic)
- Non-taxable
- *As listed by the Government of Canada*

** This plan summary in no way represents a contract.*

Please refer exclusively to your group benefit contract for details of your group benefits plan



Health Spending Account Option

It is critical that a benefit plan meet the needs and wants of potential and current employees so that your company can attract and retain the right people. Employees expect to receive benefits; however, it is also important that the employer be able to sustain the ever-increasing costs of benefits over the long term.

A Health Spending Account (HSA) provides a means for employees to have the choice of where they want to spend their allocated benefit dollars—to the predefined limit as set forth by the employer. The predefined limit set by the employer gives the employer the cost surety over the long term for controlling the costs.

It's all about choice:

- Choice for the employer to determine what they want to provide to their employees and
- Choice for the employees to pick what is necessary for their family.

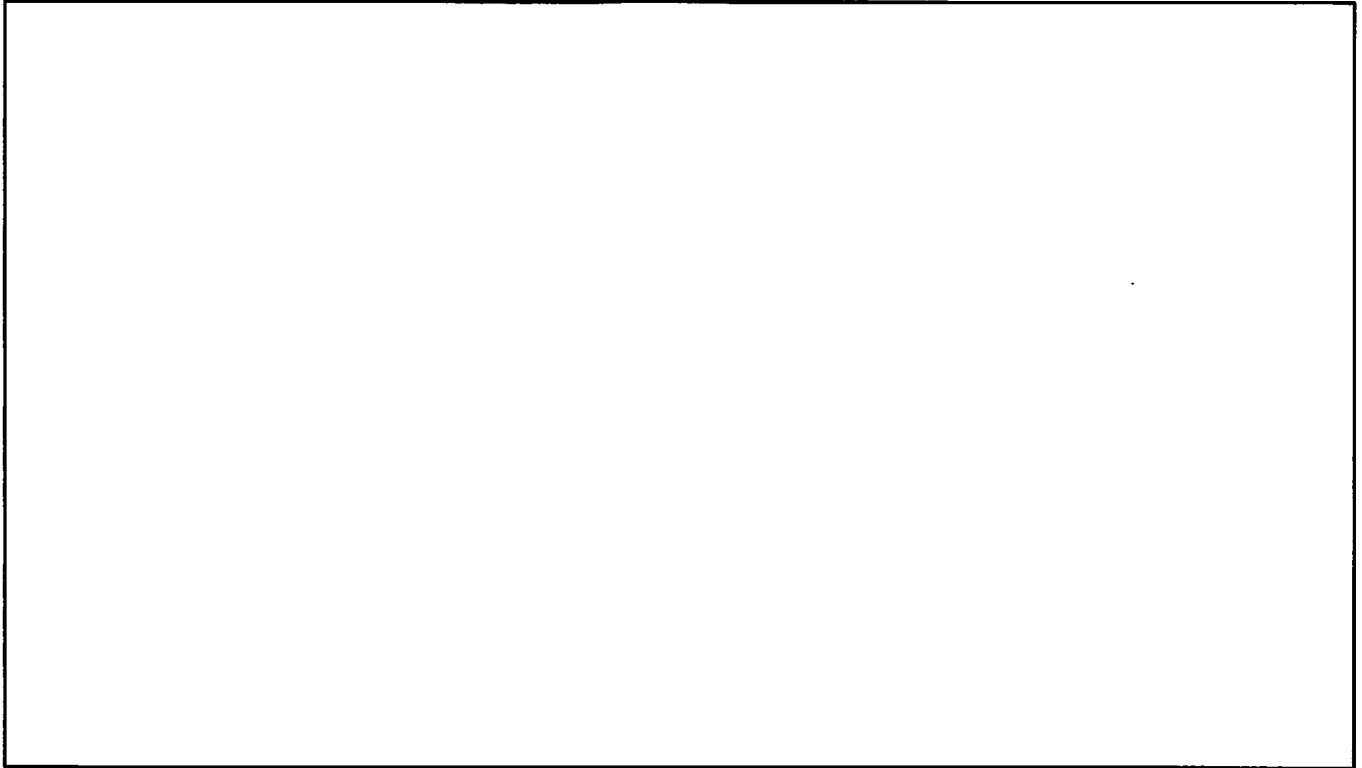
There are typically no sign-up costs in implementing a HSA, there are no card transactions costs, no hidden fees, no interest, or penalty charges.

Most plans operate on 12% administration fee charged on claims only. If there is no usage on the HSA then there are no charges.

Health Spending Account Option

Deciding on whether a Health Spending Account will be the correct option for your corporation means understanding the “risk” associated with self-insuring the claims.

To determine what is the correct maximum, it is imperative to analysis where the plan has been used.



Notes

The above numbers reflect the total estimated premium spent to cover off \$750 of paramedical coverage and Dental Care claims combined on a self-funded ASO plan as is offered with Hamlet of Enterprise.

Administration for a health spending account is based (12%) on claims ONLY.

What the above chart illustrates is that if Hamlet of Enterprise chooses to implement a health spending account based upon the same premium being spent, Hamlet of Enterprise will spend roughly the same amount of money, but offer employees more choice on their coverage options and insure that there is insurance for the “risk” of high-costing medical issues like pharmacy, ambulance, and travel.



Royal Bank of Canada
6 Fl, 335 – 8 Ave S.W.
Calgary, Alberta T2P-1C9
Tel: 403-681-2803

Subject: RBC Group Advantage
Financial Wellness and Retirement Savings Program

The RBC Group Advantage program, which differentiates RBC from all other financial institutions & increases your competitive advantage in the industry, is a benefit program to enhance your employee benefit offering.

As an employer, finding the right employees and keeping them is essential for your business success. At the same time, minimizing employee turnover greatly enhances productivity and reduces costs. One of the ways you can help enhance employee loyalty is by providing useful benefits which they may not find with other companies.

You can promote loyalty and increase tenure within your organization by providing your employees with a customized value proposition enhancing their financial wellness. We have been discussing the value of a DPSP, to leverage the benefit of a vesting component for your employer contributions & reduce payroll taxes. Other options are also:

- **Group Saving Plans** – savings accounts and registered investment plans for employees. (GRSP; GIA; GTFSA; DC Pensions) Including multiple platform choices for each employee.
- **Group Banking** – advice, support, savings & exclusive rewards for employees.
- **Advice Events** – Education for your employees on site (or virtually) to improve their financial literacy.
- **Bank at Work** – one to one personalized advice & all-inclusive banking, from a team of professionals delivered on-site &/or virtually.
- **Welcome to Canada Banking Package**- assists newcomers getting established.
- **Mortgage Assistance Program** – assist employees with their mortgage payments.

With the RBC Advantage program, you benefit from:

- The ability to offer a benefit program with no administrative fees.
- Dedicated support and service to you, throughout the plan setup and ongoing management.

Please see attached brochure for further details. Meanwhile, please feel free to contact me if you have any questions.



Group External
Brochure personalizer

Sincerely,

Lynn Molvik, RPA | RBC Group Advantage, Group Retirement Consultant | Royal Bank 335-8 Ave SW, 6th Floor, Calgary AB T2P-1C9 | Cell 403-681-2803

Helping you build and retain a productive workforce



RBC Group Advantage™ is a comprehensive program that can help you take care of you and your employees' overall financial needs. From retirement savings and investments to everyday banking, our experienced advisors will provide advice to put you and your employees on the path to financial wellness.

Delivering expert advice and guidance is what sets us apart

When you choose RBC Group Advantage for your company's Registered Pension Plan or Group Retirement Savings, you're choosing a partner for the road ahead. We'll work with you every step of the way to ensure your plan meets its objectives. As the Royal Bank of Canada is registered pension plan and group retirement savings program backed by 150 years of banking experience, we can give you all the support you need.

✓ **Invested In Your Company's Success** – As a trusted partner, we will take the time to understand the needs of your business build a registered pension plan or group retirement savings plan that sets up your company and its employees for success.

✓ **Advice That Comes To You** – We offer a dedicated team that will be there with you and your employees for the entire journey long after you have launched your plan. Our Mobile Financial Advisors can meet wherever it's convenient, including at the workplace.

✓ **We'll help your employees stay on track** – When an employee's needs change, your advisor will help them adjust their plan as required – ensuring their goals stay firmly within reach.

MyAdvisor – Your employees can view their savings and investments in one place

MyAdvisor is a one-of-a-kind digital service that lets your employees see their savings accounts and other investments all in one place.

- Employees quickly see how they are doing with powerful visuals and forecasts
- They can meet with a live advisor through video chat, by phone or in person to review their plan
- Progress alerts let employees know whether to adjust their savings, and they can update their goals online at any time

Registered Pension Plan and Group Retirement Saving options

Establishing a group savings plans allows employees to contribute to an investment or registered savings account directly from their payroll, enhancing your total compensation program. We'll work with you to select the Registered Pension and Group Savings Plan that best suits the needs of your company and your employees:

Defined Contribution Pension Plan (DCPP) A plan where the employee and/or employer contribute a percentage of employee earnings up to a maximum prescribed by the Income Tax Act (Canada). The value of the employee's plan account at retirement will vary based upon the employee and employer contribution amounts and the performance of the investments selected.

Group Retirement Savings Plan (GRSP) is a collection of individual RRSP accounts administered by a company or organization on behalf of its employees. The GRSP allows employees to contribute directly from their payroll using pre-tax dollars and is a powerful and effective plan to help them prepare for a financially secure retirement.

Group Tax-Free Savings Account (GTFSA) is a flexible plan that shelters employees' investment earnings and withdrawals from tax while allowing them to reach a variety of short- and long-term goals.

Deferred Profit Sharing Plan (DPSP) allows you to transfer pre-tax company profits to members, reducing your company's taxes payable. DPSP contributions are not subject to payroll-related charges, including CPP or QPP deductions, EI premiums or healthcare taxes. Only company earnings can be contributed to a DPSP.

Group Investment Account (GIA) is a non-registered plan that helps employees meet a variety of financial goals, including saving for vacations, work sabbaticals and home ownership or improvement.

Voluntary Retirement Savings Plan (VRSP) is a low cost, easy to administer group savings option available in the Province of Quebec. Participating in a VRSP is mandatory for businesses with five or more eligible employees that do not already offer a workplace savings plan.

Royal Choices: Invest your way

Your employees understand their needs better than anyone. That's why we offer Royal Choices, three different investment options suited to employees' individual circumstance, allowing them to select the option that is best for their unique needs.

RBC Royal Bank® Advice that fits your life

When it comes to saving and investing, it's never too early or too late to get started. When investing with RBC®, our advisors will provide simple, practical advice based on personal goals and expectations. They'll even help employees figure out exactly how much to invest.

RBC Dominion Securities® A personalized, dedicated approach

We offer a comprehensive range of wealth management services – from investment advice and portfolio management to financial, retirement and estate planning. Employees will benefit from the personalized attention of an accredited RBC Dominion Securities advisor, who will work with them to understand their unique financial needs.

RBC Direct Investing® Self-directed, online investing

For those who want to make their own investment decisions, RBC Direct Investing offers in-depth research, a wide range of investment choices and accounts, and an innovative Community, where employees can learn, share ideas and connect with other investors. Plus, they can open a Practice Account with \$100,000 of practice money to try out investing, risk free!.

RBC Group Advantage goes above and beyond

Contact us to learn how your organization can benefit from RBC Group Advantage.

Call our dedicated, toll-free line at 1-800-835-3855.
Learn more at rbc.com/rbcgroupadvantage



RBC Royal Bank Group Savings Plans are products of RBC Group Advantage, under Royal Bank of Canada. RBC Funds are offered by RBC Global Asset Management Inc. and distributed through authorized dealers. Guaranteed investment certificates (GICs) are products of Royal Bank of Canada or its affiliates. Investment advice is provided by Royal Mutual Funds Inc. or RBC Dominion Securities Inc.* Royal Mutual Funds Inc. is licensed as a financial services firm in Quebec. RBC Global Asset Management Inc., Royal Mutual Funds Inc., RBC Dominion Securities Inc., RBC Direct Investing Inc.* and Royal Bank of Canada are separate corporate entities which are affiliated.

RBC Direct Investing Inc. does not provide investment advice or recommendations regarding the purchase or sale of any securities. Investors are responsible for their own investment decisions. RBC Direct Investing is a business name used by RBC Direct Investing Inc. Please consult your advisor and read the prospectus before investing. There may be commissions, trailing commissions, management fees and expenses associated with mutual fund investments. Mutual funds are not guaranteed; their values change frequently and past performance may not be repeated.

* Member—Canadian Investor Protection Fund.

¹ The RBC VRSP is a low cost, no advice plan. Fees will be charged to the members of the plan in accordance with VRSP legislation. There is no cost to a sponsor to participate in the RBC VRSP; however, some ad hoc and/or exception transaction fees may be charged to the sponsor.

The printing, copying, redistribution or retransmission of this Content without express written permission is prohibited.

© / ™ Trademark(s) of Royal Bank of Canada. RBC and Royal Bank are registered trademarks of Royal Bank of Canada. Used under licence.
© Royal Bank of Canada, 2019. VPS103075

122305 (04/2019)

NEW ITEM

HAMLET OF ENTERPRISE
526 Robin Road
Enterprise, NT, X0E 0R1



REQUEST FOR DECISION

DATE	SUBJECT	PREPARED BY
May 11, 2023	Asset disposal - freezers	Blair Porter

RECOMMENDATION

That Council make a motion to allow for the sale of one or two freezers for the amount of \$1200 for one or \$2000 for two.

CONCEPT

During the events of last year, the Hamlet purchased several freezers to stock food to supply to flood victims. Now that is past, and the Hamlet does not have the need to keep all the freezers. A resident of Enterprise has made an offer to purchase one or two of them for the above price.

RELEVANT DOCUMENTATION

Email offer (attached)

OPTIONS

1. Make the motion to approve the sale of the freezer(s).
2. Keep the freezer(s) for future Hamlet use.
3. Dispose of the freezer(s) at a future time.

PREFERRED OPTION: #1

sao@enterprise-nt.ca

From: James Zepp <jeff@sficontracting.com>
Sent: April 12, 2023 10:06 AM
To: sao@enterprise-nt.ca
Subject: Freezer offer to purchase

Good morning,

We would like to offer 1200\$ for the freezer that we spoke about - assuming it is in great condition
I would also be interested in buying 2 of them for 2000\$

please let me know

Thank you very much

Jeff
SFI Contracting
403-899-3991

NEW ITEM

HAMLET OF ENTERPRISE
526 Robin Road
Enterprise, NT, X0E 0R1



REQUEST FOR DECISION

DATE	SUBJECT	PREPARED BY
May 11, 2023	AWP MOU Committee	Blair Porter

RECOMMENDATION

That Council appoint two councillors to sit on the AWP MOU Committee, along with the SAO.

CONCEPT

AWP Industries Ltd has requested that the committee be re-established to facilitate better communication between AWP Industries Ltd and Council.

RELEVANT DOCUMENTATION

N/A

OPTIONS

1. Appoint 2 councillors to the committee, along with the SAO.
2. Keep the status quo.

PREFERRED OPTION: #1

NEW ITEM

HAMLET OF ENTERPRISE
526 Robin Road
Enterprise, NT, X0E 0R1



REQUEST FOR DECISION

DATE	SUBJECT	PREPARED BY
May 11, 2023	OHSC Committee	Blair Porter

RECOMMENDATION

That Council appoint two councillors to sit on the OHSC Committee, one as an alternate, along with the SAO.

CONCEPT

WSSC requires the Hamlet to have an OHSC committee made up of equal representation of administration and employees. The employees choose among themselves who will sit on the committee, and council chooses who sits on the committee for administration.

RELEVANT DOCUMENTATION

WSSC Code of Practice – Joint OHSC Committees

OPTIONS

1. Appoint 2 councillors to the committee, along with the SAO.

NEW ITEM



Acknowledgement of Consultation

Attestation de la consultation

District / Detachment Information - Renseignements sur le district ou le détachement

Fiscal Year - Année financière 2023 - 2024

RCMP Active Cost Centre Hierarchy

C

SOUTH DISTRICT

SOUTH DISTRICT

HAY RIVER DET

Hay River Det.

Community Name(s) - Nom(s) de la(des) collectivité(s)

- 1. Enterprise

This letter acknowledges that the stakeholders of the above-noted detachment / district / unit area or community(ies) and the RCMP have consulted and discussed our progress against last year's priority issues. Further it has been agreed that over the coming year we will collectively focus on the following priority issues.

La présente lettre atteste que les responsables de la région du détachement/district/service ou de la ou des collectivités susmentionnées et de la GRC se sont consultés et ont discuté des progrès accomplis par rapport aux enjeux prioritaires de l'année dernière. Il a aussi été convenu que les enjeux suivants constituent les enjeux prioritaires sur lesquels nous concentrerons conjointement nos efforts au cours de l'année à venir.

Community Priority Issue(s) - Enjeu(x) prioritaire(s) pour la collectivité

- 1. Community Policing - Community/Partner Engagement
2. Traffic - Safety (motor vehicles, roads)
3. Harm Reduction - Substance abuse

District / Detachment Commander - Chef de district / détachement

Philip Unger

District / Detachment Commander

Signature - Signature

Date

Community Representative - Représentant(e) de la collectivité

Mayor or representative

Name - Nom

Signature - Signature

Date